

ATTACHMENT "A"
IMPROVEMENT PLANS

For

TRACT 6102, dated August 5, 2011, including Revision 1, dated August 16, 2011

LEGEND & ABBREVIATIONS

PROPOSED	DESCRIPTION
---	BOUNDARY
---	PROPERTY LINE
---	RETAINING WALL
---	SUBURBAN LINE
---	TROUBLE
SD	STORM DRAIN LINE
SS	SANITARY SEWER LINE
W	WATER LINE
G	GAS LINE
JT	JOINT TRENCH
---	SET BACK LINE
---	SWALE FLOW DIRECTION
---	RED CURB
CB	CATCH BASIN
JR	JUNCTION BOX
AD	AREA DRAIN
SCD	SANITARY SEWER CLEANOUT
CI	CURB INLET
SM	SANITARY SEWER MANHOLE
SE	SPOT ELEVATION
→	FLOW DIRECTION
BM	BENCHMARK
---	CONTOURS
---	TREE TO BE REMOVED
---	(G) GAS
SD	(S) STORM DRAIN LINES
SS	(SS) SANITARY SEWER LINES
W	(W) WATER LINES
BC	BACK OF CURVE
SW	BOTTOM OF WALL (EARTH RETAINED)
CO	CLEAN OUT
FO	END OF CURVE
FL	FRESH GRADE
FL	FLOW LINE
GR SL	GARAGE SLAB
IN	INLET GRADE
LN	LANDING
PC	POINT OF REVERSE CURVATURE
PC	POINT OF COMPOUND CURVATURE
SM	SMALL CURVE
SCD	SANITARY SEWER CLEAN OUT
TC	TOP OF CURB
TW	TOP OF WALL (EARTH RETAINED)

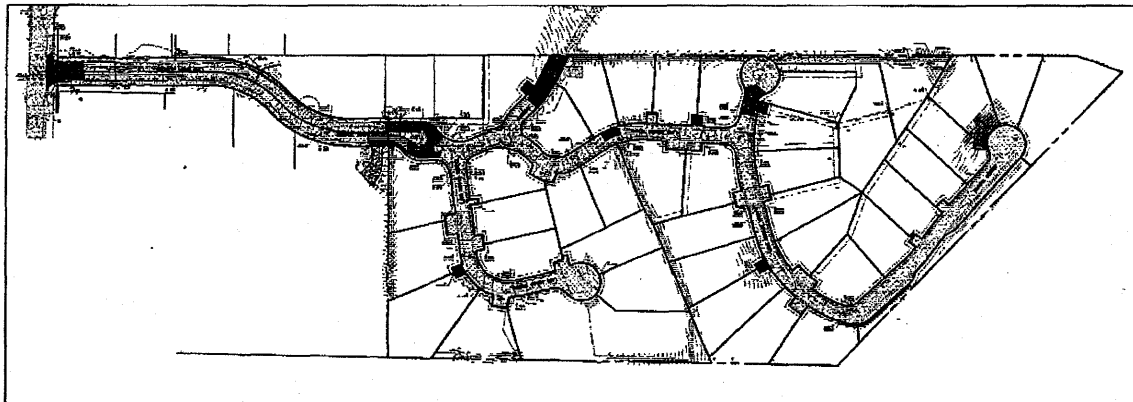
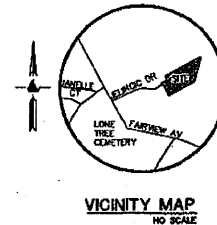
IMPROVEMENT PLANS

for

TRACT 6102

HAYWARD (UNINCORPORATED)

COUNTY OF ALAMEDA, CALIFORNIA



RETAINING WALL NOTES

1. TW/FO REPRESENTS FINISHED EARTHEN GRADE OR PAVEMENT ELEVATION AT TOP OF WALL, NOT ACTUAL TOP OF WALL MATERIAL. SW/FO REPRESENTS FINISH EARTHEN GRADE OR PAVEMENT ELEVATION AT BOTTOM OF WALL, NOT INCLUDING FILL FOUNDATIONAL GRADES INDICATED ON THESE PLANS. REFER TO THE FINISHED GRADES ADJACENT TO THE RETAINING WALL, NOT INCLUDING FOOTING, FREEBOARD, ETC.
2. DIMENSIONS SHOWN IN BRACKETS SHOWN AS [FOOT] DENOTE THE EFFECTIVE WALL HEIGHT ONLY. THE ACTUAL WALL HEIGHT AND DEPTH MAY DIFFER DUE TO CONSTRUCTION REQUIREMENTS.
3. REFER TO SPECIFIC WALL CONSTRUCTION DETAIL FOR STRUCTURAL ELEMENTS, FREEBOARD, AND EMBEDEDMENT.
4. REFER TO ARCHITECTURAL, LANDSCAPE ARCHITECTURE, AND/OR STRUCTURAL PLANS FOR DETAILS: WALL ELEVATIONS, SUBDRAINAGE, WATERPROOFING, FINISHED, COLORS, STEEL REINFORCING, MATERIALS, ETC. PROVIDE CURBS OR OTHER BEANS OF SECURING FRESH MATERIALS AS NECESSARY (NET SET INTO THE WALL).
5. ALL RETAINING WALLS SHOULD HAVE A BACK-OF-WALL SUB-SURFACE DRAINAGE SYSTEM INCLUDING WEEDHOLES TO PREVENT HYDROSTATIC PRESSURE.
6. SEE DETAIL SHEET FOR SPECIFIC INFORMATION.
7. PROVIDE GUARDRAIL (WHERE APPLICABLE AND DENIED BY OTHERS) AS REQUIRED FOR GRADE SEPARATION OF 30 INCHES OR MORE MEASURED 5' HORIZONTALLY FROM FACE OF WALL PER CAL.

APPROVALS:
ALAMEDA COUNTY PUBLIC WORKS AGENCY:
IMPROVEMENT PLANS REVIEWED BY:

BY: DANIEL WOLFGARTEN, P.E., P.C. COUNTY ENGINEER
REC. 0000, REG. EXPIRES 8/30/12

GEOTECHNICAL ENGINEERING NOTE:
IT IS THE RESPONSIBILITY OF THE CONTRACTOR TO RETAIN A LICENSED GEOTECHNICAL ENGINEER FOR RECOMMENDATIONS AND OBSERVATIONS OF RECORD PROPOSED BY THIS PLAN. THE GEOTECHNICAL ENGINEER OF RECORD MAY MAKE RECOMMENDATIONS THAT WILL SUPERCEDE THESE PLANS. SHOULD RECOMMENDATIONS ARISE, CONTACT LEA & BRAZE ENGINEERING, INC. AT 510-887-4086.

REFERENCES
THIS IMPROVEMENT PLAN IS SUPPLEMENTAL TO:
1) UPDATED TOPOGRAPHIC SURVEY BY LEA AND BRAZE ENGINEERING, INC. ENTITLED:
"TRACT 6102"
JELINCIC DRIVE
HAYWARD, CALIFORNIA
JOB NO. 20020355
DATED: 5-05-05
2) IMPROVEMENT PLANS BY MARK THOMAS & CO. INC. ENTITLED:
"TRACT 6102 GRADING PLAN"
HAYWARD, CALIFORNIA
JOB NO. 23-00012
DATED: MAY 1999
THE CONTRACTOR SHALL REFER TO THE ABOVE NOTED SURVEY AND PLANS, AND SHALL VERIFY BOTH EXISTING AND PROPOSED TREES ACCORDING TO THEM.
THE CONTRACTOR SHALL REFER TO THE LANDSCAPE ARCHITECT'S PLAN FOR FINE GRADING WITH INHIBIT LOCALIZED DRAINAGE IN PLANTING AND HARDSCAPE AREAS. THE INHIBIT DRAIN LINES TO THE LARGER STORM DRAIN (SD) SYSTEM.

TRACT IMPROVEMENTS & STANDARDS

1. ALL IMPROVEMENTS WITHIN/OR ADJACENT TO PROPOSED PRIVATE DRIVE (P.S.E. EXACT) TO BE PER COUNTY OF ALAMEDA PUBLIC WORKS STANDARDS. REFER TO IMPROVEMENT PLANS BY MARK THOMAS & CO., INC. FOR PREVIOUSLY APPROVED TRACT DEVELOPMENT.
2. UNLESS OTHERWISE STATED, ALL NECESSARY EASEMENTS AND STREET RIGHT-OF-WAY SHALL BE OBTAINED AND ALL IMPROVEMENTS SHALL BE DESIGNED AND INSTALLED AT THE COST TO THE COUNTY OF ALAMEDA.
3. ALL IMPROVEMENTS SHALL BE DESIGNED AND CONSTRUCTED IN ACCORDANCE WITH THE ALAMEDA COUNTY FLOOD CONTROL STANDARD SPECIFICATION AND DETAILS, UNLESS OTHERWISE INDICATED.
4. ALL DESIGN WORK SHALL BE PERFORMED BY THE SUBDIVIDER'S ENGINEER, UNLESS OTHERWISE INDICATED.
5. ALL STORM DRAIN INLETS SHALL HAVE A SIGN STENCILED/INSTALLED "NO DUMPING-DRAINS TO BAY".
6. ALL IMPROVEMENTS SHALL BE DESIGNED AND CONSTRUCTED IN ACCORDANCE WITH CRO LOCAL SANITARY DISTRICT STANDARD SPECIFICATIONS AND DETAILS, UNLESS OTHERWISE INDICATED.

WORK, REPAIR AND REPLACE ANY AND ALL BROKEN OR MALFUNCTIONING STREET LIGHTS THROUGHOUT THE DEVELOPMENT AS REQUIRED.

NOTE: ANY RIGHT-OF-WAY DEMONSTRATION, RELOCATION OF IMPROVEMENT OR PUBLIC FACILITIES OR ROAD IMPROVEMENTS SHALL BE ACCOMPLISHED AT NO EXPENSE TO THE COUNTY.



NOTE: FOR CONSTRUCTION STAKING SCHEDULING OR QUOTATIONS PLEASE CONTACT GREG BRAZE AT LEA & BRAZE ENGINEERING (510)887-4086 EXT 102. gbraze@leabraze.com

BENCHMARK:
ALAMEDA COUNTY BENCHMARK ALAMEDA COUNTY STREET MONUMENT ON FARVIEW AVENUE, APPROXIMATELY 340 FEET FROM THE INTERSECTION OF FARVIEW AVENUE AND JELINCIC DRIVE, BRASS CURB IN MONUMENT WILL STAMPED YEAR B 1967 ELEVATION: 446.87.
ELEVATION: 446.27

SHEET INDEX

C-#	TITLE SHEET
C-1	JOB # 1 & 2
C-2	JOB # 3
C-3	JOB # 4
C-4	JOB # 4 CURB PROFILES
C-5	JOB # 5
C-6	JOB # 5, 7 & 8
C-7	JOB # 9, 10 & 11
C-8	JOB # 12, 13, 14 & 15
C-9	JOB # 16 & 17
C-10	JOB # 18 & 19
C-11	JOB # 20
C-12	JOB # 20 SECTIONS STA 0+70 TO 1+10
C-13	JOB # 20 SECTIONS STA 1+70 TO 3+13.10
C-14	JOB # 20 SECTIONS STA 3+70 TO 4+70
C-15	JOB # 20 SECTIONS STA 5+20 TO 6+20
C-16	JOB # 20 SECTIONS STA 6+70
C-17	JOB # 21
C-18	DETAILS
C-19	DETAILS
C-20	DETAILS
ER-1	EROSION CONTROL PLAN
ER-2	EROSION CONTROL DETAILS

REVISION BY: [] P1
JOB NO. 2102094
DATE: 6-5-11
SCALE: 1" = 100'
DESIGN BY: J.R.C.
DRAWN BY: []
SHEET NO. []

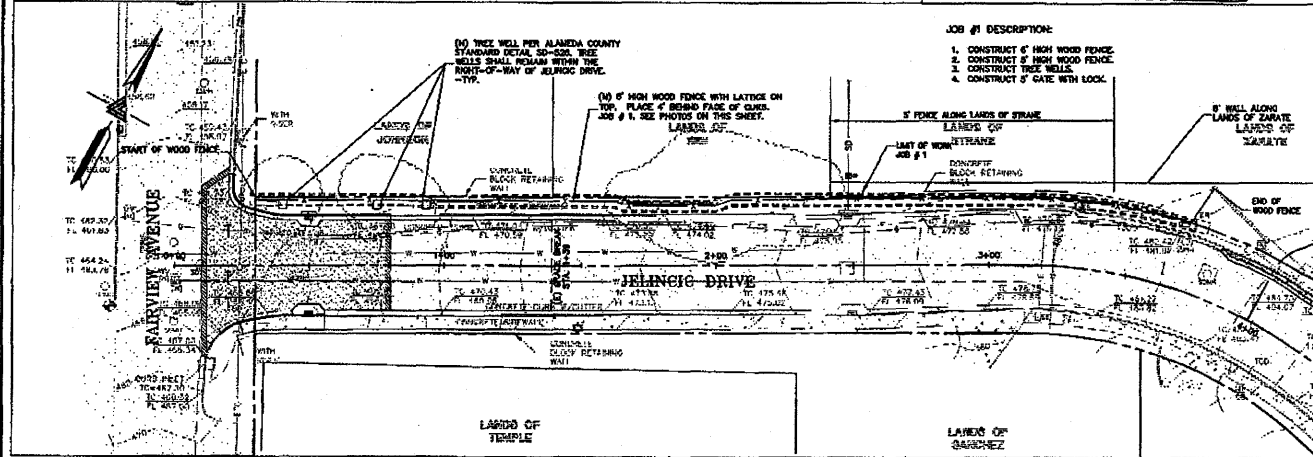
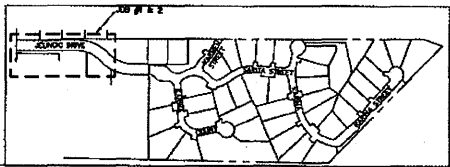


LEA & BRAZE ENGINEERING, INC.
10000 UNIVERSITY AVENUE SUITE 100
MAYFIELD, CALIFORNIA 94543
HAYWARD, CALIFORNIA 94543
(510) 887-4086
(510) 887-4088
(510) 887-4089
WWW.LEA&BRAZE.COM

TRACT 6102
JELINCIC DRIVE
EDEN TOWNSHIP
UNINCORPORATED ALAMEDA COUNTY

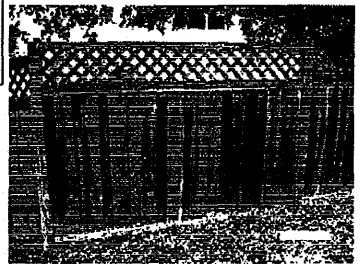
TITLE SHEET

C-1

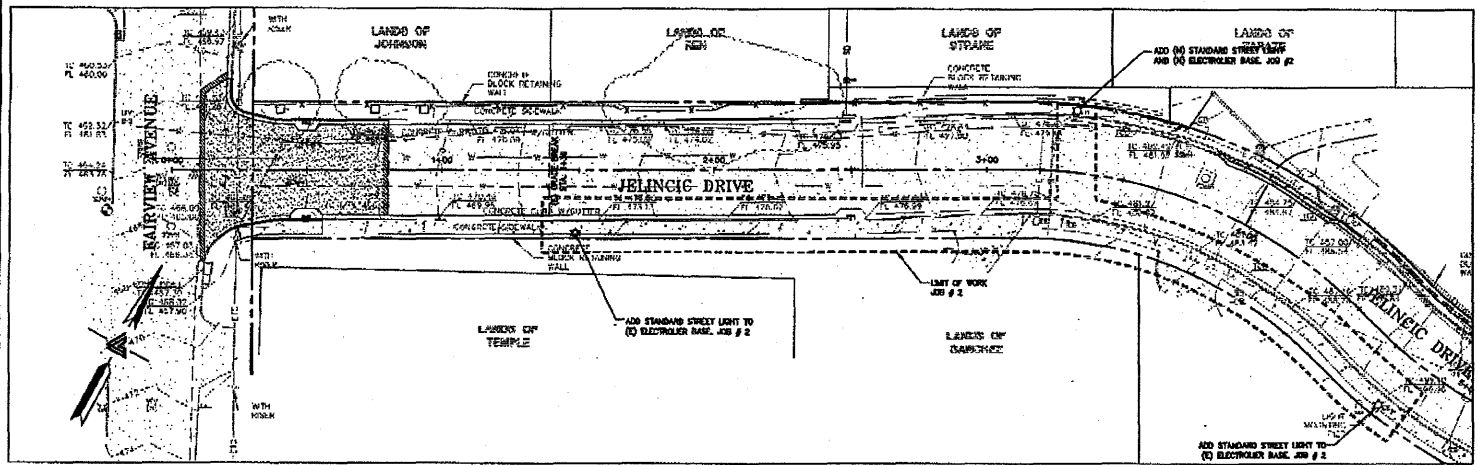


JOB # 1
SCALE: 1" = 20'

- JOB #1 DESCRIPTION:**
1. CONSTRUCT 5' HIGH WOOD FENCE
 2. CONSTRUCT 5' HIGH WOOD FENCE
 3. CONSTRUCT TREE WELLS
 4. CONSTRUCT 5' GATE WITH LOCK



IMAGES OF PROPOSED WOOD FENCES



JOB # 2
SCALE: 1" = 20'

- JOB #2 DESCRIPTION:**
1. CONSTRUCT STANDARD STREET LIGHTS
 2. CONSTRUCT STREET LIGHT BASES



LEA & BRAZE ENGINEERING, INC.
 CIVIL ENGINEERS • LAND SURVEYORS
 6000 SHERRILL ROAD SUITE 200
 BAY AREA REGION SALMON RIDGE CA 94568
 NORTHERN CALIFORNIA OFFICE 2000 HILLSIDE CA 94515
 (916) 887-4000 (916) 887-4000 FAX (916) 887-4000
 WWW.LEAANDBRAZE.COM

**TRACT 6102
 JELINCIC DRIVE
 EDEN TOWNSHIP**
 UNINCORPORATED ALAMEDA COUNTY

JOB # 1 & 2

REVISIONS	BY

JOB NO: 2103094
 DATE: 6-5-11
 SCALE: AS NOTED
 DESIGN BY: JL/PC
 DRAWN BY: TB
 SHEET NO:





LEA & BRAZE ENGINEERING, INC.
 LEA & BRAZE ENGINEERING, INC.
 3101 N. W. 13TH AVENUE, SUITE 200
 FORT LAUDERDALE, FL 33304
 (954) 944-1100
 (954) 944-1101
 (954) 944-1102
 FAX (954) 944-1103
 WWW.LEA-BRAZE.COM

TRACT 6102
 JELINCIC DRIVE
 EDEN TOWNSHIP
 UNINCORPORATED ALABAMA COUNTY

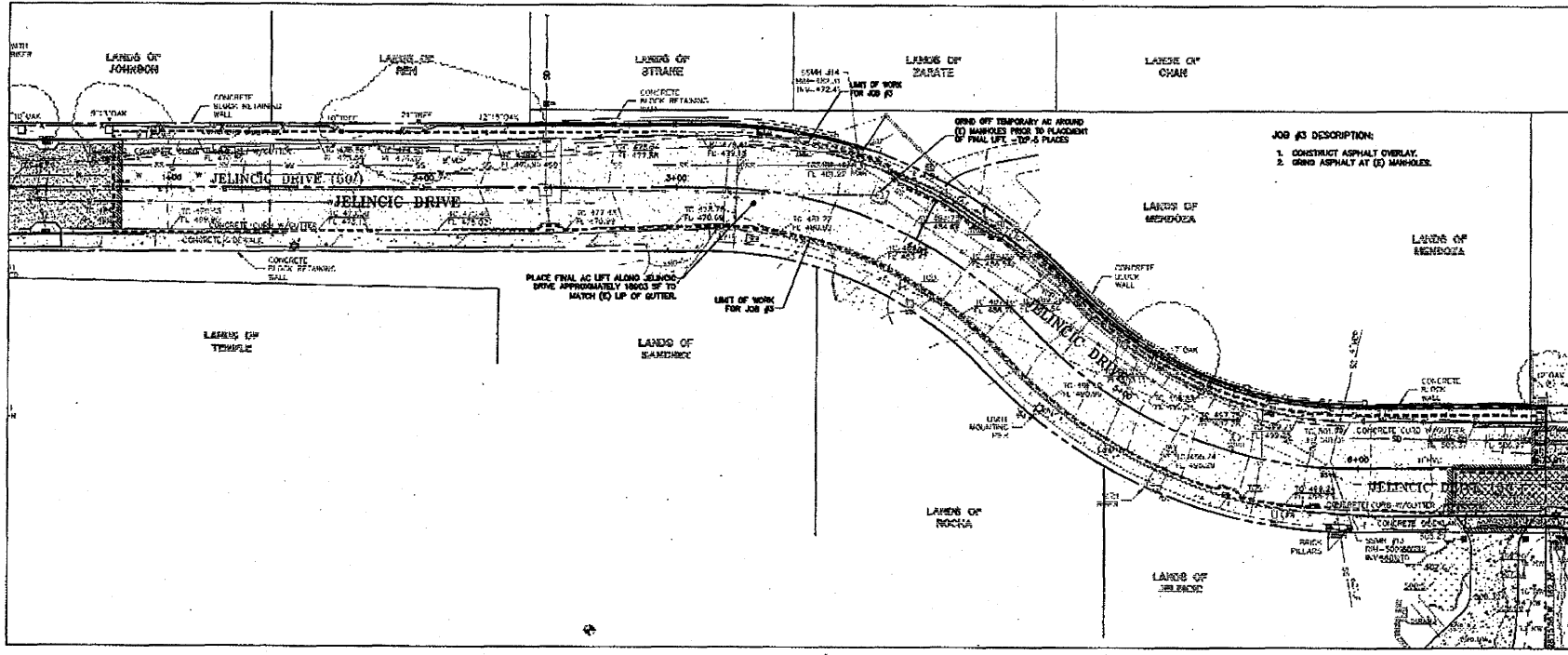
JOB # 3

	REVISIONS	BY

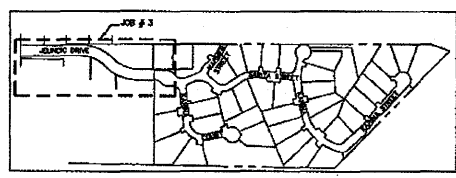
JOB NO. 2100094
 DATE 6-5-11
 SCALE AS NOTED
 DESIGN BY JLR/KC
 DRAWN BY TB
 SHEET NO.



3 OF 22 SHEETS



JOB # 3
 SCALE 1" = 20'





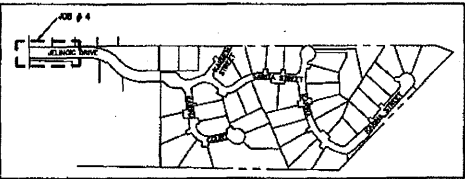
LEA & BRAZE ENGINEERING, INC.
 2401 JELINEC DRIVE
 SUITE 100
 EDEN, CALIFORNIA 95625
 (916) 486-3000
 (916) 486-3008
 (916) 486-3009
 WWW.LEABRAZE.COM

**TRACT 6102
 JELINEC DRIVE
 EDEN TOWNSHIP**
UNINCORPORATED ALAMEDA COUNTY

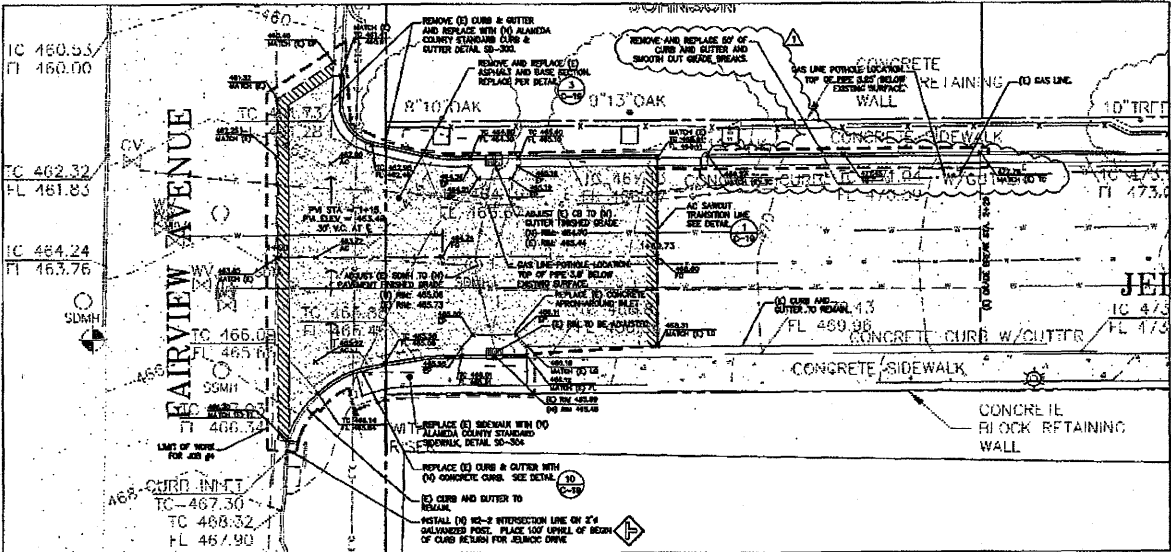
JOB # 4

REVISION	BY	DATE
1	AL	11-20-11
2		
3		
4		
5		
6		
7		
8		
9		
10		
11		
12		
13		
14		
15		
16		
17		
18		
19		
20		
21		
22		
23		
24		
25		
26		
27		
28		
29		
30		

C-4
 4 OF 22 SHEETS



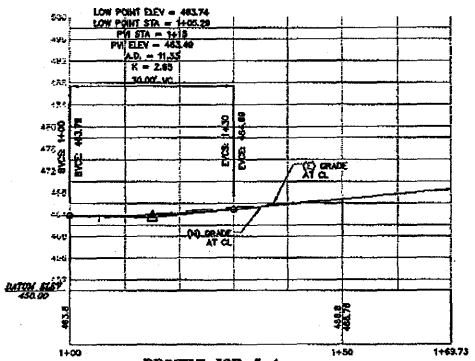
KEY MAP
 SCALE: 1" = 250'



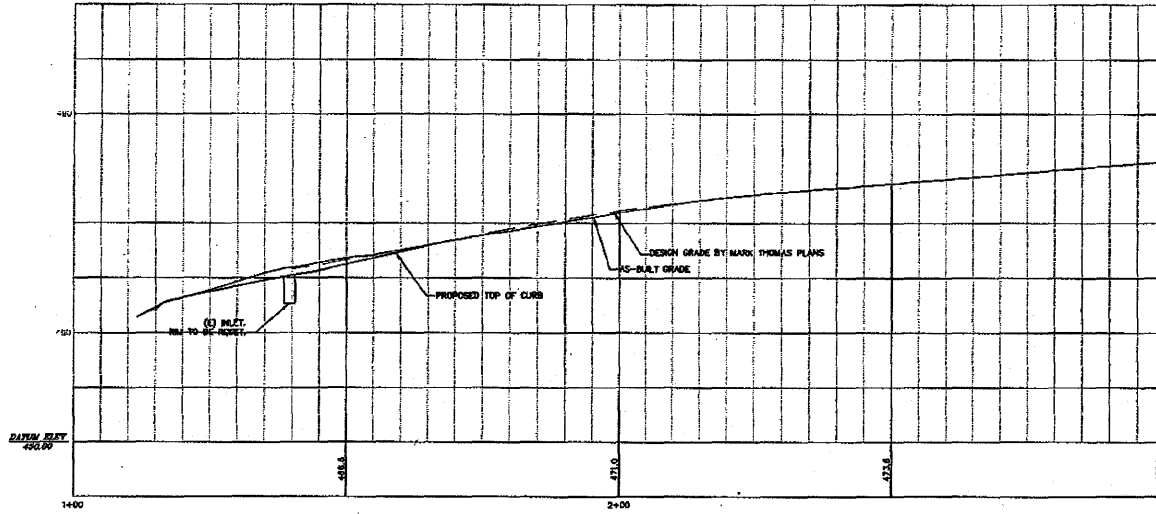
NOTE: PAVEMENT SECTIONS FROM ORIGINAL MARK THOMAS PLANS FOR TRACT 6102 DATED 2-3-2000

JOB # 4
 SCALE: 1" = 10'

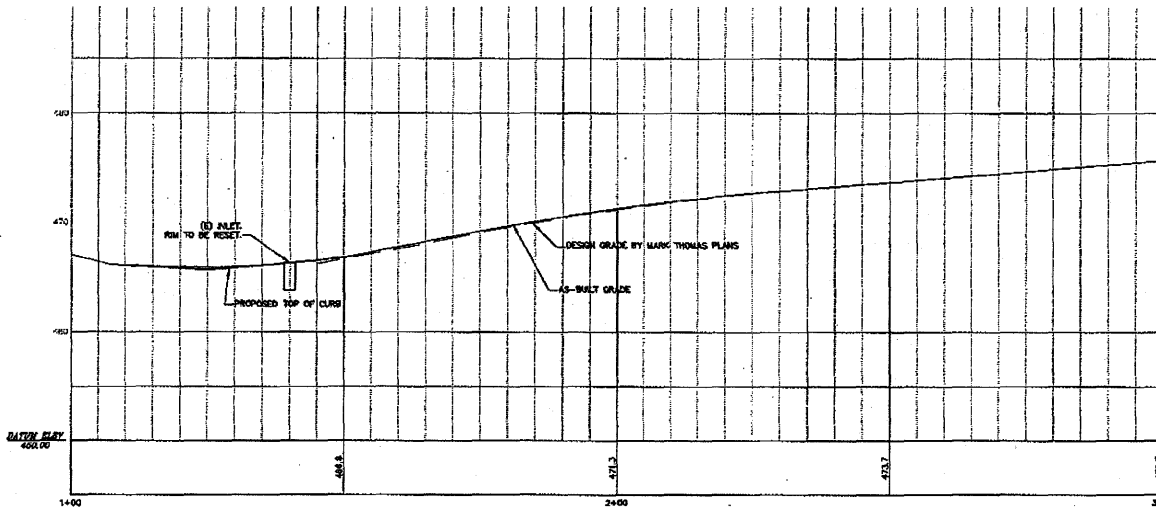
- JOB #4 DESCRIPTION:**
1. REMOVE AND REPLACE CURB AND OUTTER.
 2. REMOVE AND REPLACE SIDEWALK.
 3. LOWER CATCH BASIN.
 4. LOWER MANHOLE.
 5. REMOVE AND REPLACE ASPHALT PAVEMENT.
 6. CONSTRUCT ASPHALT OVERLAY.



PROFILE JOB # 4
STA 1+00 TO 1+63.73 @ CL
 SCALE: HORIZ. 1" = 10' VERT. 1" = 10'
 SEE SHEET C-5 FOR CURB PROFILE



JELINCIC LEFT CURB PROFILE JOB #4
1"=10' HOR & 1"=4' VERT



JELINCIC RIGHT CURB PROFILE JOB #4
1"=10' HOR & 1"=4' VERT



LEA & BRAZE ENGINEERING, INC.
 LEA & BRAZE ENGINEERING, INC.
 3415 W. WOODBRIDGE BLVD.
 SUITE 200
 MOBILE, ALABAMA 36688-1334
 (205) 837-3344
 (205) 837-3344
 WWW.LEA-BRAZE.COM

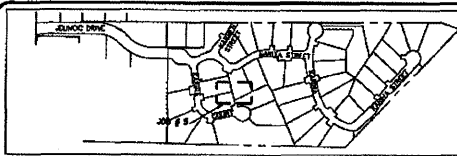
TRACT 6102
JELINCIC DRIVE
EDEN TOWNSHIP
 UNINCORPORATED ALABAMA COUNTY

JELINCIC DRIVE
CURB PROFILES

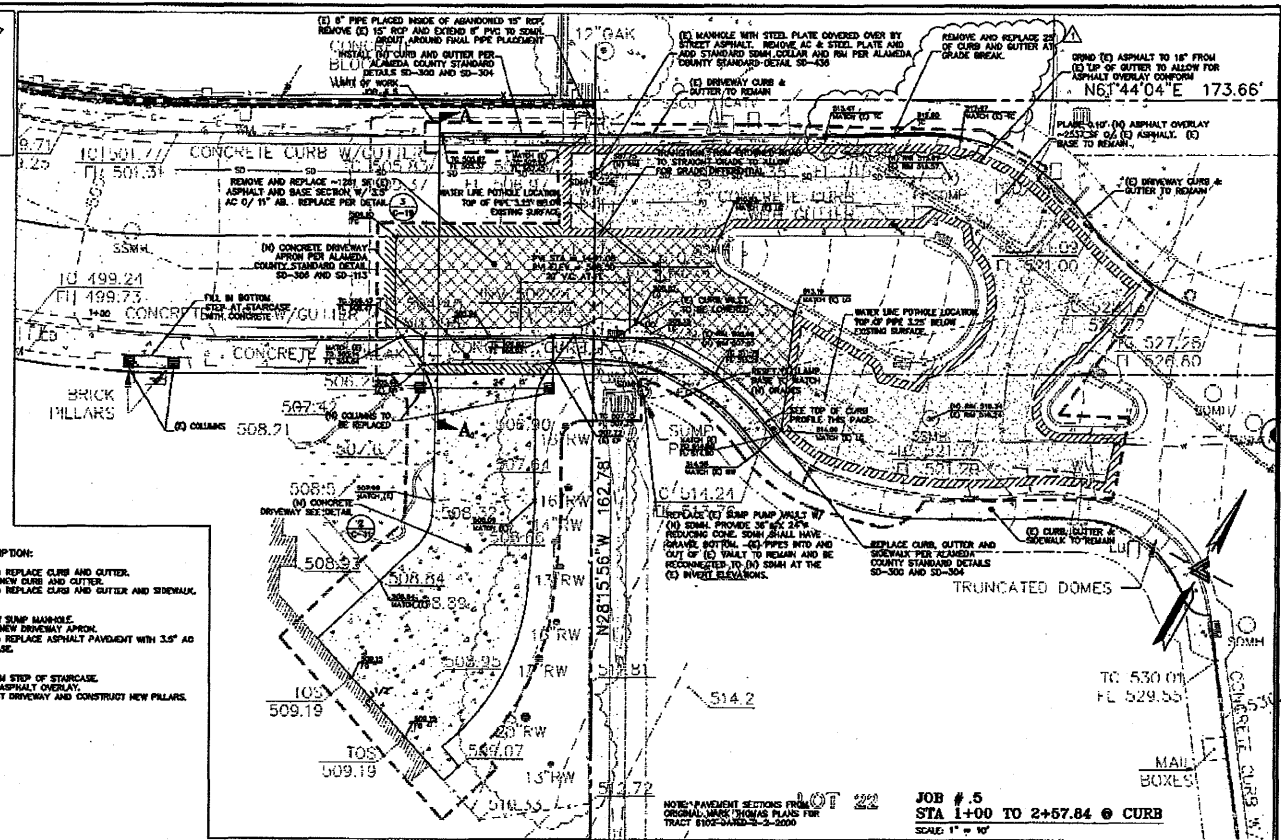
NO.	REVISIONS	BY

JOB NO. 2100084
 DATE 8-5-11
 SCALE AS NOTED
 DESIGN BY JFC
 DRAWN BY DE
 SHEET NO.

0-5



KEY MAP
SCALE 1" = 200'



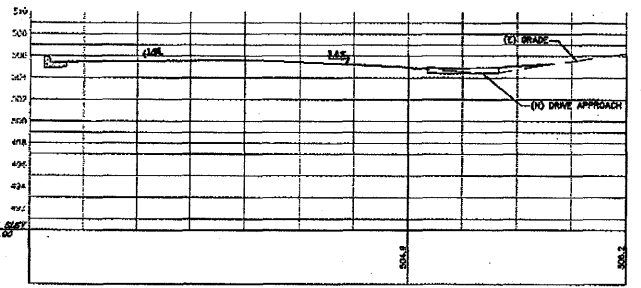
- JOB #5 DESCRIPTION:**
1. REMOVE AND REPLACE CURB AND GUTTER.
 - 1A. CONSTRUCT NEW CURB AND GUTTER.
 2. REMOVE AND REPLACE CURB AND GUTTER AND SIDEWALK.
 3. N/A
 4. N/A
 5. N/A
 6. INSTALL NEW SUMP MANHOLE.
 7. REMOVE AND REPLACE ASPHALT PAVEMENT WITH 3.5" AS OVER 1" BASE.
 8. N/A
 9. N/A
 10. POUR BOTTOM STEP OF STAIRCASE.
 11. CONSTRUCT ASPHALT OVERLAY.
 12. RECONSTRUCT DRIVEWAY AND CONSTRUCT NEW PILLARS.



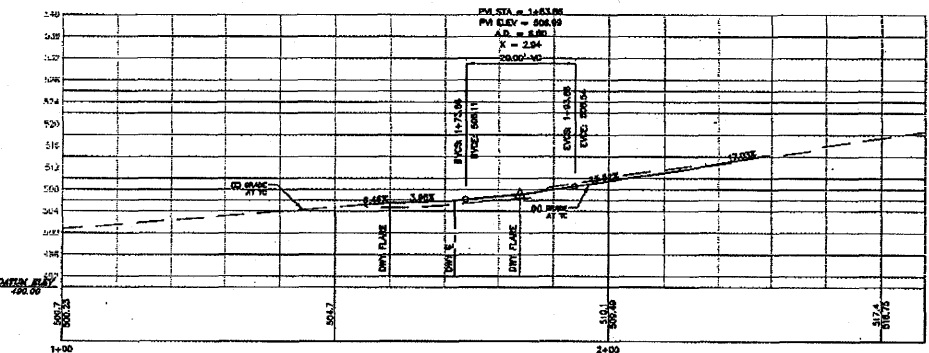
LEA & BRAZE ENGINEERING, INC.
 PROFESSIONAL ENGINEERS
 LAND SURVEYORS
 545 W. UNIVERSITY AVENUE, SUITE 300
 GAITHERSBURG, MD 20878
 (301) 291-1300
 (7) (410) 871-1000
 WWW.LEABRAZE.COM

**TRACT 6102
 JELINCIC DRIVE
 EDEN TOWNSHIP
 UNINCORPORATED ALAMEDA COUNTY**

JOB # 5



SECTION A
 SCALE HORIZ 1" = 5'
 VERT 1" = 5'



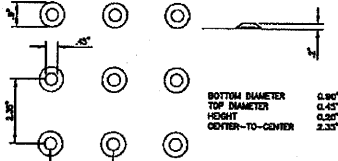
PROFILE JOB # 5
 STA 1+00 TO 2+57.84 @ CURB
 SCALE: HORIZ 1" = 10' VERT 1" = 10'

REVISIONS	BY

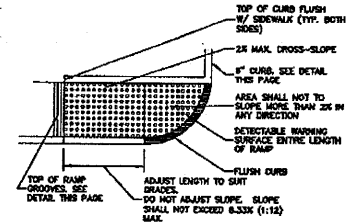
JOB NO: 2100004
 DATE: 8-3-11
 SCALE: AS NOTED
 DESIGN BY: JARC
 DRAWN BY: JB
 SHEET NO: 6

NOTES

- CURB RAMPS SHALL HAVE DETECTABLE WARNING SURFACE THE ENTIRE RAMP TRAVEL.
- THE DETECTABLE WARNING BORDER SHALL BE A CONTRASTING SURFACE WITH THE ADJOINING SURFACE. ONLY ADA ACCESSIBLE PRODUCTS APPROVED BY THE DIVISION OF THE STATE ARCHITECT OF CALIFORNIA SHALL BE USED.
- DOSE ORIENTATION SHALL CONFORM TO THE LATEST ADA/TITLE 24 REGULATIONS.
- IF PRECAST CONCRETE DETECTABLE WARNING DOMES PAVERS ARE USED, THEY WILL NEED TO BE INSTALLED ON TOP OF A 4" THICK CONCRETE SURFACE. PAVERS SHALL BE LAID SUCH THAT JOINTS ARE LEVEL WITH ADJOINING SURFACE, TO PROVIDE A SMOOTH TRANSITION FROM PAVEMENT TO PAVEMENT AND FROM PAVEMENT TO CONCRETE.
- IF PLASTIC MAT DETECTABLE WARNING DOMES ARE USED, THE MAT NEEDS TO BE FLUSH WITH THE ADJOINING CONCRETE SURFACE. WHERE THE MAT IS INSTALLED, THE CONCRETE SURFACE WILL NEED TO BE HELD DOWN THE THICKNESS OF THE MAT.



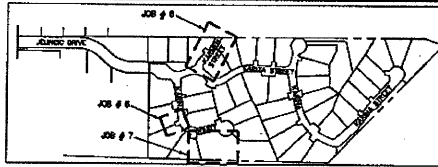
1 DETECTABLE WARNING SURFACE
M/S



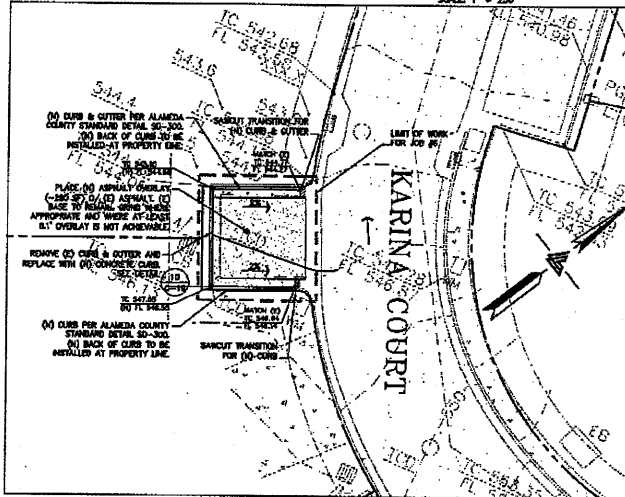
2 ACCESSIBLE RAMP
M/S

JOB #6 DESCRIPTION:

- REMOVE AND REPLACE CURB AND GUTTER.
- CONSTRUCT ASPHALT OVERLAY.
- SAWCUT CURB AND GUTTER.



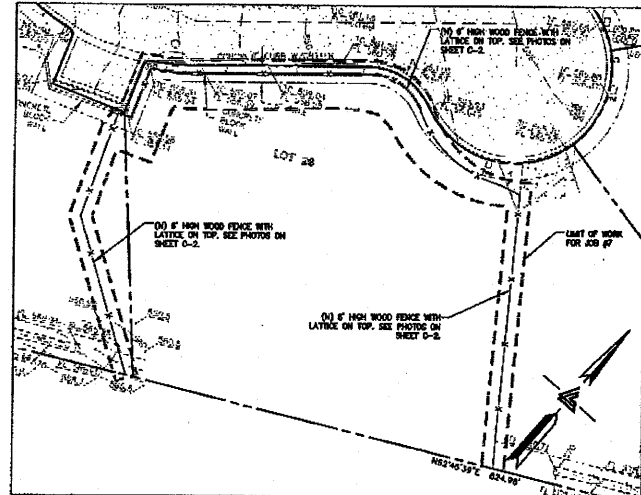
KEY MAP
SCALE: 1" = 250'



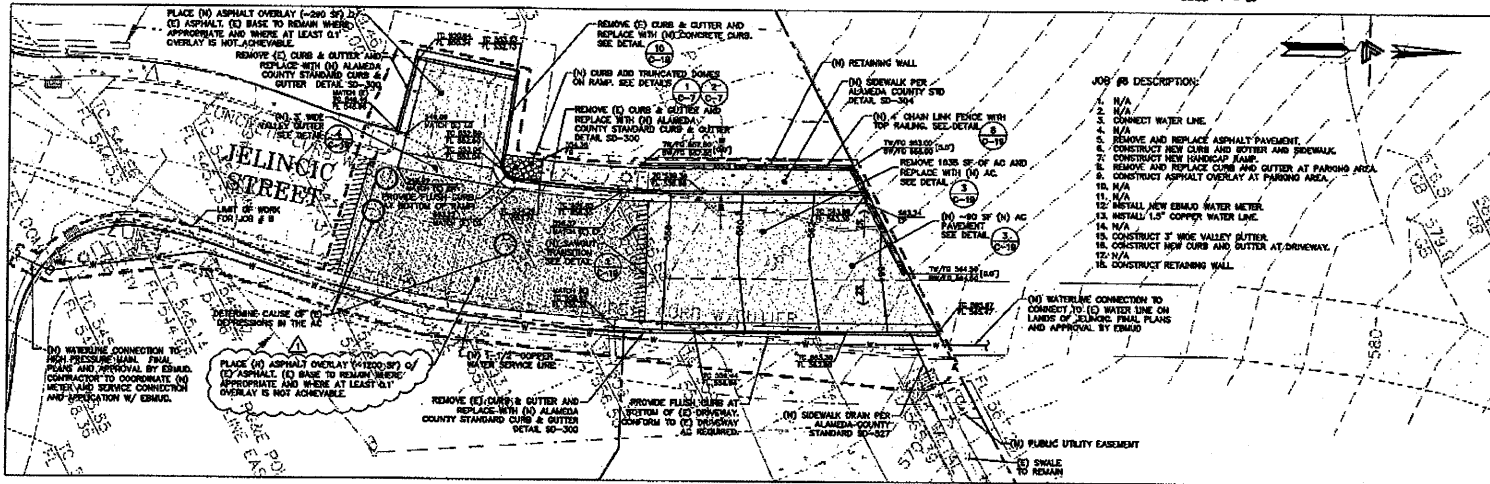
JOB # 8
SCALE: 1" = 10'

JOB #7 DESCRIPTION:

- CONSTRUCT 6' HIGH WOOD FENCE.
- N/A
- CONSTRUCT 6' GATE IN WOOD FENCE.



JOB # 7
SCALE: 1" = 20'



JOB # 8
SCALE: 1" = 10'

JOB #8 DESCRIPTION:

- N/A
- N/A
- CONNECT WATER LINE.
- N/A
- REMOVE AND REPLACE ASPHALT PAVEMENT.
- CONSTRUCT NEW HOUSING RAMP.
- REMOVE AND REPLACE CURB AND GUTTER AT PARKING AREA.
- CONSTRUCT ASPHALT OVERLAY AT PARKING AREA.
- N/A
- N/A
- INSTALL NEW EMBROID WATER METER.
- INSTALL 1.5" COPPER WATER LINE.
- N/A
- CONSTRUCT 3" WIDE VALLEY GUTTER.
- CONSTRUCT NEW CURB AND GUTTER AT DRIVEWAY.
- N/A
- CONSTRUCT RETAINING WALL.



LEA & BRAZE ENGINEERING, INC.
REGISTERED PROFESSIONAL ENGINEERS
SUCCESSION NO. 2011000166
3077 DUBLIN BLVD., SUITE 200
DUBLIN, CALIFORNIA 94568
(916) 887-7000 FAX (916) 887-7001
(916) 887-7002
WWW.LEABRAZE.COM

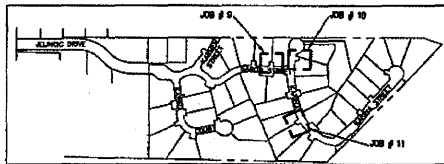
TRACT 6102
JELINCINC DRIVE
EDEN TOWNSHIP
UNINCORPORATED ALAMEDA COUNTY

JOB # 6, 7, & 8

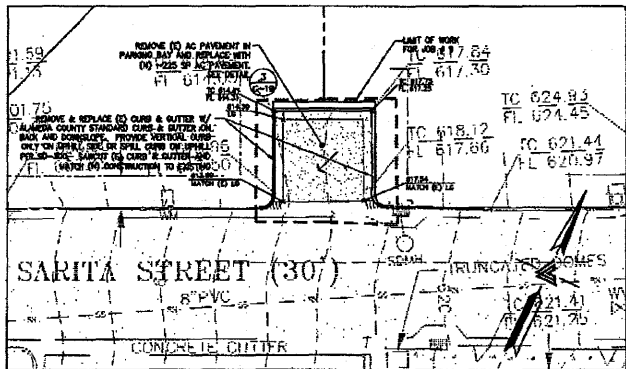
REVISIONS	BY

JOB NO. 2102024
DATE: 8-5-11
SCALE: AS NOTED
DESIGN BY: JLR/RC
DRAWN BY: TB
SHEET NO.:

C-7
7 OF 22 SHEETS



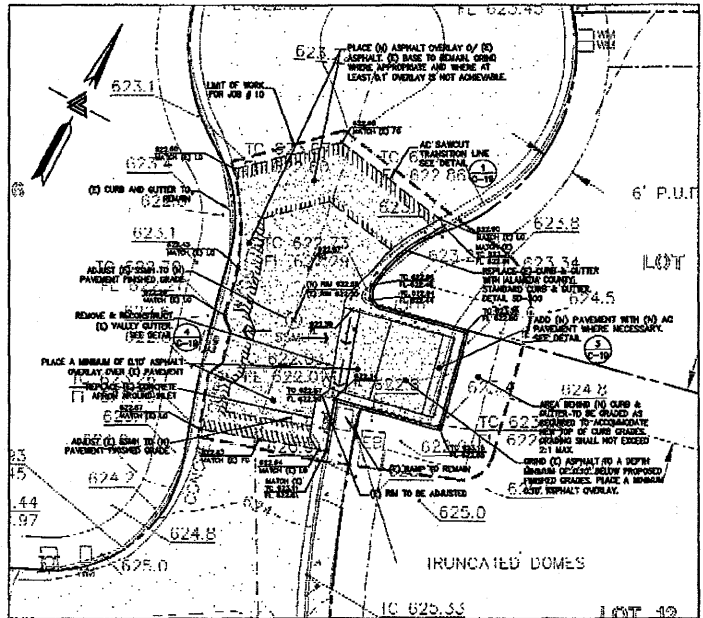
KEY MAP
SCALE: 1" = 250'



JOB #9 DESCRIPTION:

1. REMOVE AND REPLACE ASPHALT PAVEMENT.
2. REMOVE AND REPLACE CURB AND GUTTER.

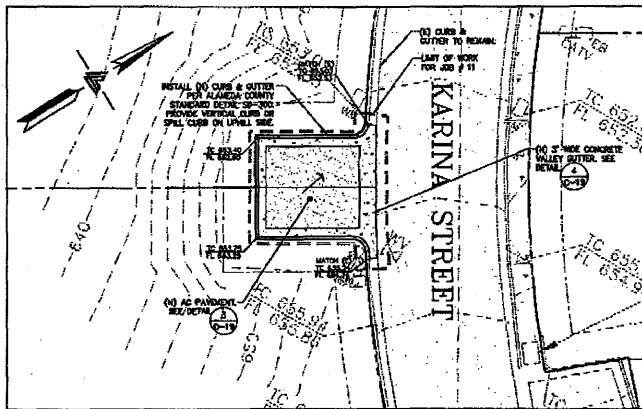
JOB #9
SCALE: 1" = 10'



JOB #10
SCALE: 1" = 10'

JOB #10 DESCRIPTION:

1. REMOVE AND REPLACE CURB AND GUTTER.
2. REMOVE AND REPLACE ASPHALT PAVEMENT.
3. ADJUST EXISTING CATCH BASIN.
4. ADJUST EXISTING MANHOLE.
5. REMOVE AND REPLACE VALLEY GUTTER.
6. CONSTRUCT ASPHALT OVERLAY.



JOB #11
SCALE: 1" = 10'

JOB #11 DESCRIPTION:

1. CONSTRUCT NEW CURB AND GUTTER.
2. CONSTRUCT NEW ASPHALT PAVEMENT.
3. CONSTRUCT NEW VALLEY GUTTER.



LEA & BRAZE ENGINEERING, INC.
CIVIL ENGINEERS • LAND SURVEYORS
SACRAMENTO REGION
SACRAMENTO, CALIFORNIA 95811
NATIONWIDE OFFICES
BAY AREA REGION: SAN FRANCISCO, CA 94103
NORTHWEST REGION: SEASIDE, CA 94133
CENTRAL REGION: SACRAMENTO, CA 95811
SOUTH REGION: SACRAMENTO, CA 95811
WWW.LEABRAZE.COM

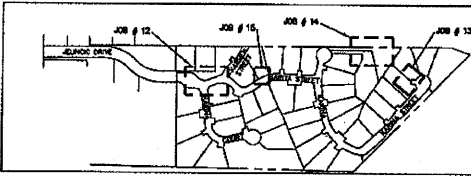
TRACT 6102
JELINCIC DRIVE
EDEN TOWNSHIP
UNINCORPORATED ALABAMA COUNTY

JOB # 9, 10 & 11

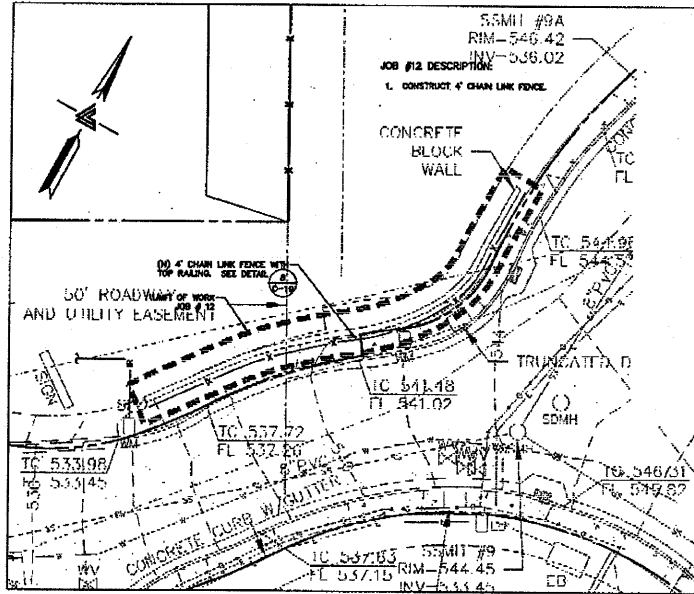
REVISIONS	BY

JOB NO. 2100094
DATE: 8-5-11
SCALE: AS NOTED
DESIGN BY: JR/TC
DRAWN BY: TB
SHEET NO.

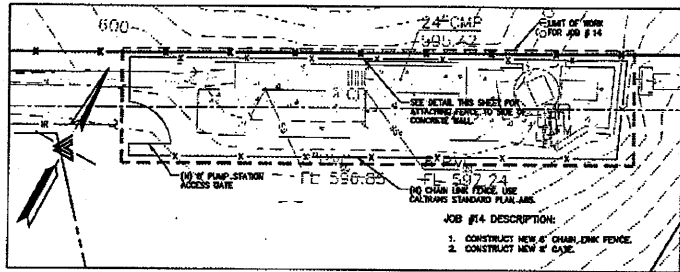




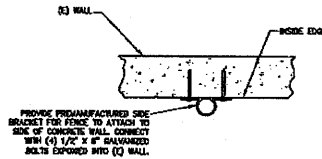
KEY MAP
SCALE: 1" = 200'



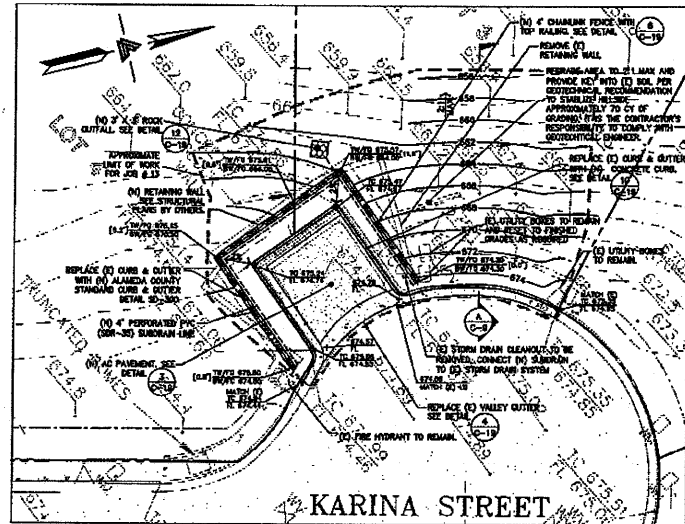
JOB # 12
SCALE: 1" = 10'



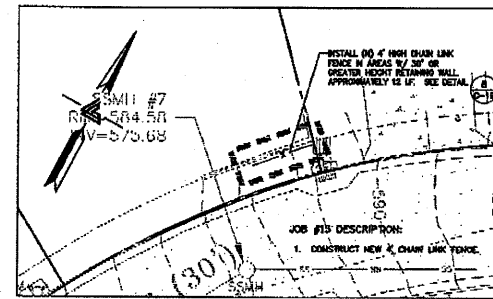
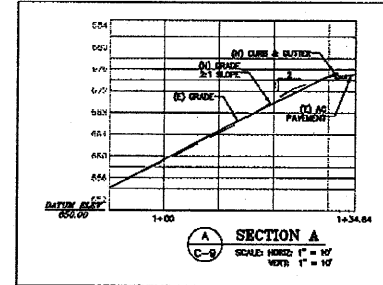
JOB # 14
SCALE: 1" = 10'



JOB #14
FENCE CONNECTION TO (E) WALL
N/S



JOB # 13
SCALE: 1" = 10' APPROXIMATE GRADING
85 C.Y. CUT
5 C.Y. FILL



JOB # 15
SCALE: 1" = 10'



LEA & BRIZE ENGINEERING, INC.
CIVIL ENGINEERS • LAND SURVEYORS
3374 WASHINGTON HWY. WEST
SUITE 2000 • ALAMEDA, CA 94601
(415) 553-1100 • FAX (415) 553-1101
WWW.LEA-AND-BRIZE.COM

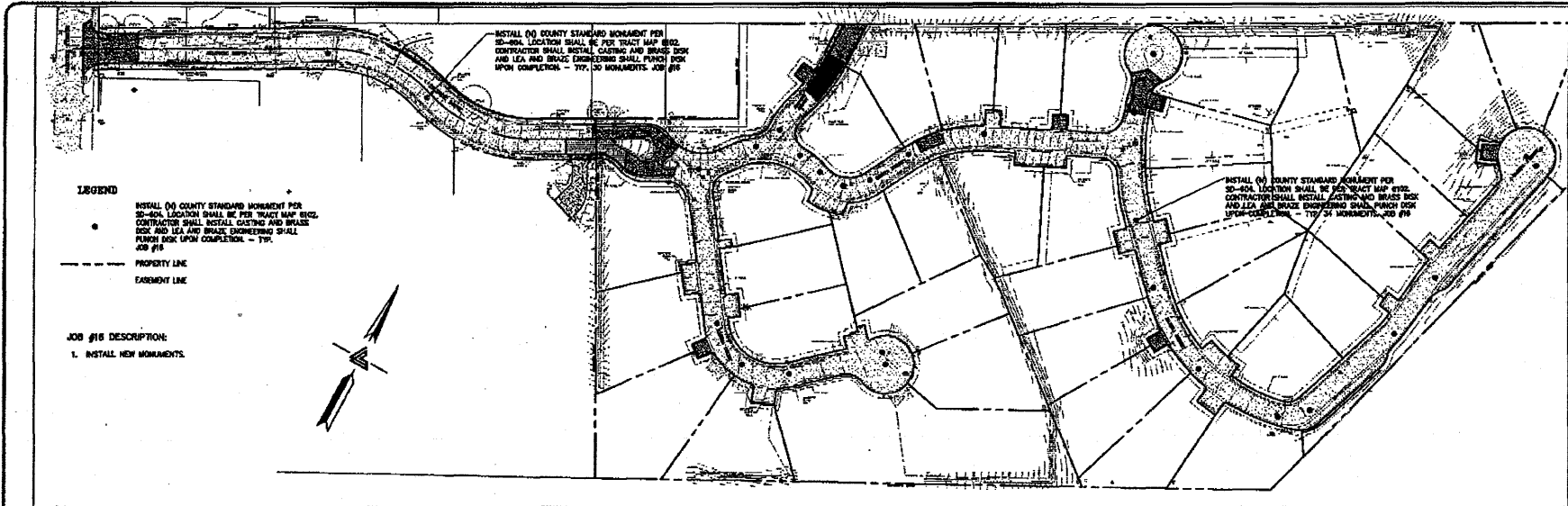
TRACT 6102
JELINCIC DRIVE
EDEN TOWNSHIP
UNINCORPORATED ALAMEDA COUNTY

JOB # 12, 13, 14 & 15

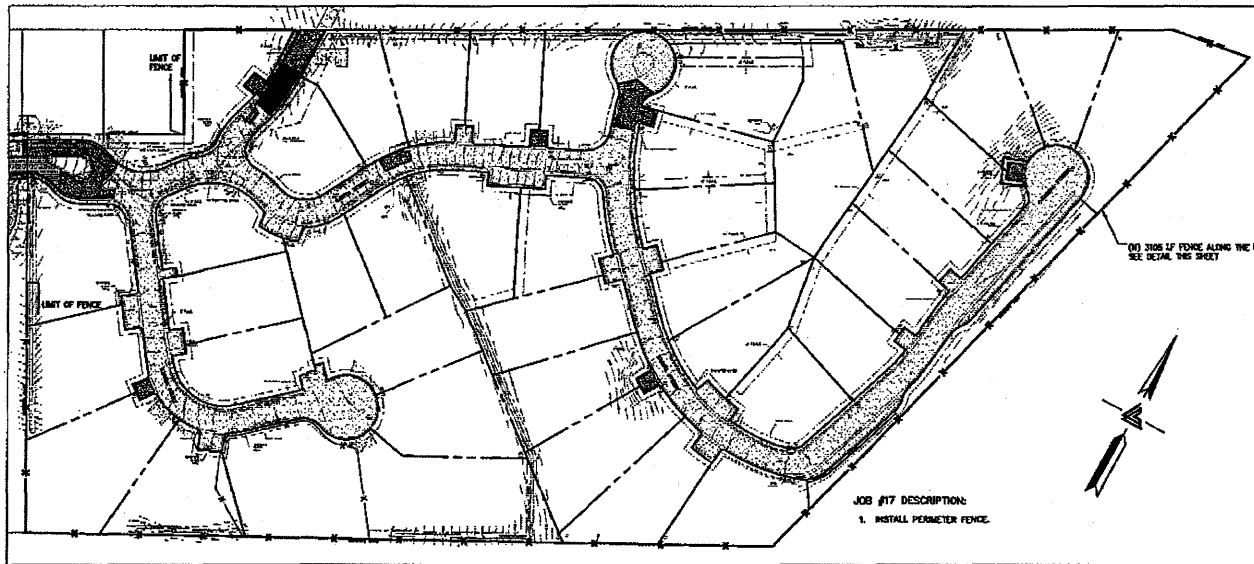
REVISIONS	BY

JOB NO: 2100004
DATE: 8-5-11
SCALE: AS NOTED
DESIGN BY: JLB/PC
DRAWN BY: TB
SHEET NO:

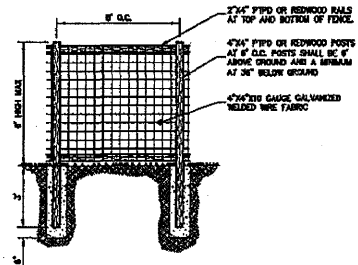




MONUMENT INSTALLATION PLAN - JOB # 16
SCALE: 1" = 60'



JOB # 17
SCALE: 1" = 60'



JOB # 17 FENCE
W/F



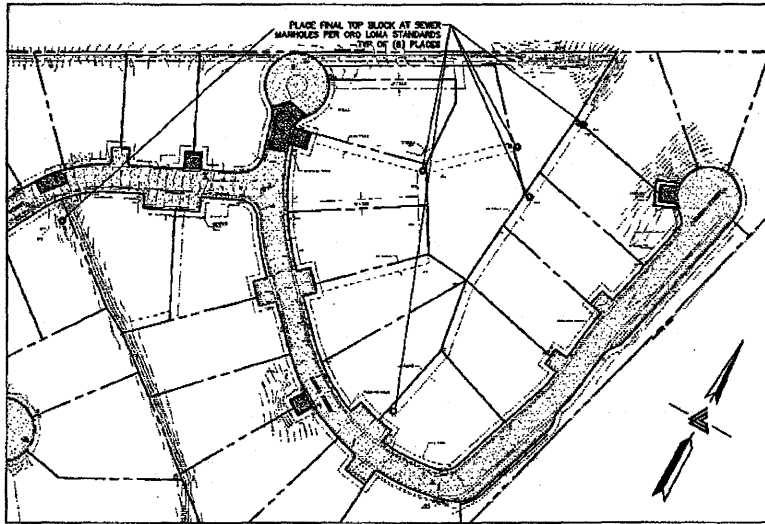
LEA & BRAZE ENGINEERING, INC.
 CIVIL ENGINEERS - LAND SURVEYORS
 8145 W. HICKORY STREET
 RAYLEIGH, NORTH CAROLINA 27606
 PHONE: (919) 882-1000
 FAX: (919) 882-1008
 WWW.LEA-BRAZE.COM

**TRACT 6102
JELINCIC DRIVE
EDEN TOWNSHIP
UNINCORPORATED ALAMANCE COUNTY**

JOB # 16 & 17

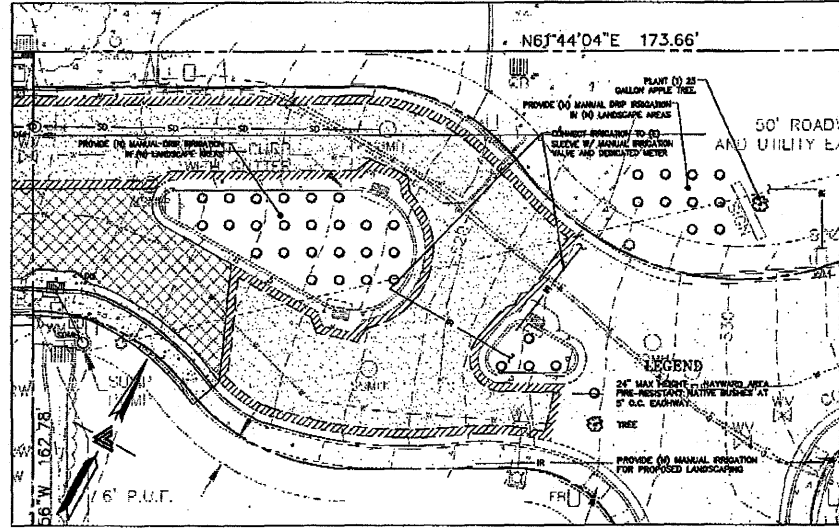
NO.	REVISIONS	BY

JOB NO. 2102004
DATE: 8-5-11
SCALE: AS SHOWN
DESIGN BY: JLR/RC
DRAWN BY: TB
SHEET NO.



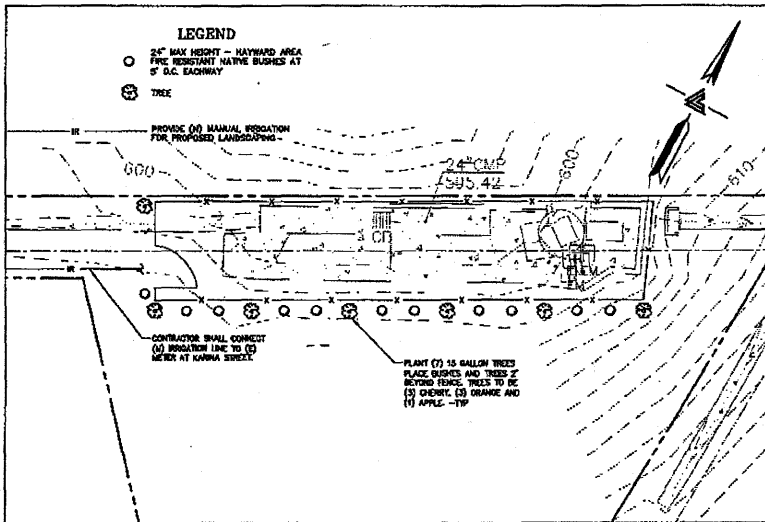
SSMH TOP BLOCK INSTALLATION - JOB # 18
SCALE: 1" = 8'

JOB #18 DESCRIPTION:
1. REMOVE AND REPLACE SEWER MANHOLE TOP BLOCKS.

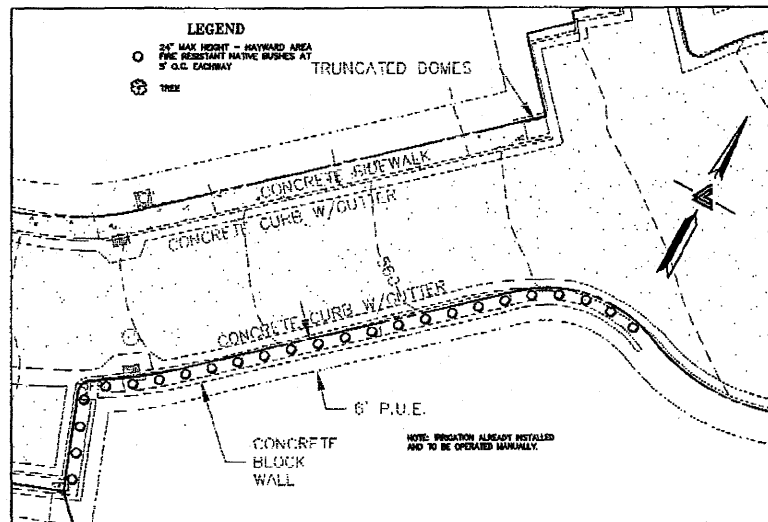


JOB # 19
SCALE: 1" = 10'

JOB #19 DESCRIPTION:
1. INSTALL LANDSCAPING AT THREE LOCATIONS WITH MANUAL IRRIGATION.



JOB # 19
SCALE: 1" = 10'



JOB # 19
SCALE: 1" = 10'



LEA & BRAZE ENGINEERING, INC.
CIVIL ENGINEERS • LAND SURVEYORS
SACRAMENTO REGION, WEST
BAY AREA REGION, WEST
NORTH BAY AREA REGION
NORTH SAN FRANCISCO BAY AREA
NORTH SAN FRANCISCO BAY AREA
971 (916) 871-2000
WWW.LEA-BRAZE.COM

**TRACT 6102
JELINCIC DRIVE
EDEN TOWNSHIP
UNINCORPORATED ALABAMA COUNTY**

JOB # 18 & # 19

REVISIONS	BY

JOB NO: 2100004
DATE: 8-5-11
SCALE: AS NOTED
DESIGN BY: JL/TC
DRAWN BY: TB
SHEET NO:



LEA & BRAZE ENGINEERING, INC.
 CIVIL ENGINEERS • LAND SURVEYORS
 814 AREA ROAD, SUITE 100
 BAYVIEW, CALIFORNIA 94026
 (415) 881-1200 FAX (415) 881-1202
 WWW.LEA-BRAZE.COM

**TRACT 6102
 JELINCIC DRIVE
 EDEN TOWNSHIP**
 UNINCORPORATED ALABAMA COUNTY

JOB # 20

REVISION	DATE	BY
1	8-5-11	JR
2		
3		
4		
5		

REVISIONS BY

JOB NO: 2100094
 DATE: 8-5-11
 SCALE: AS NOTED
 DESIGN BY: JR/JC
 DRAWN BY: JR
 SHEET NO.

C-12
 11 OF 22 SHEETS

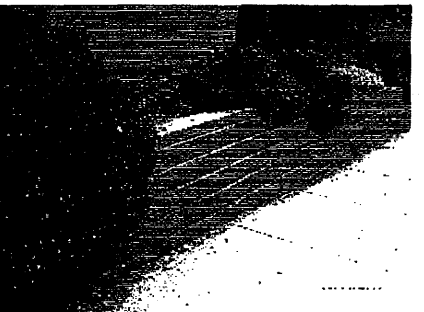
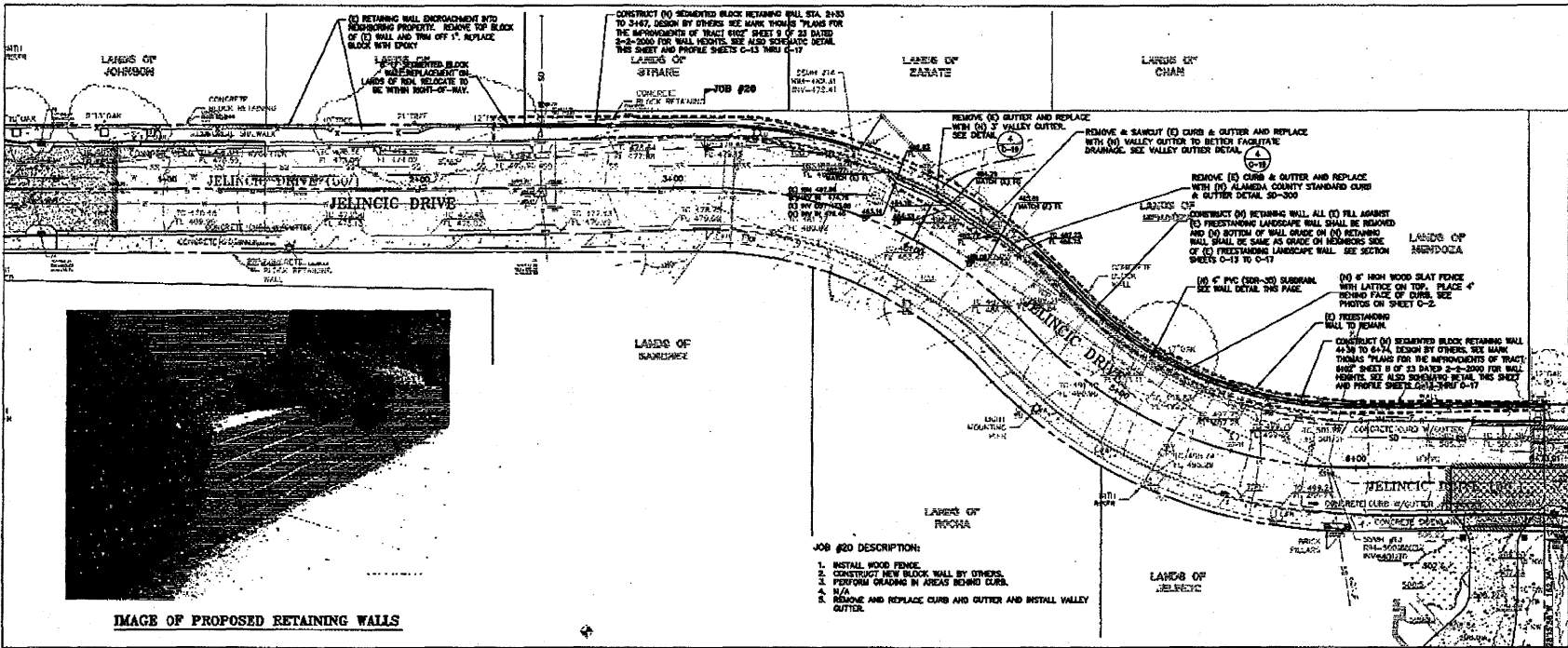
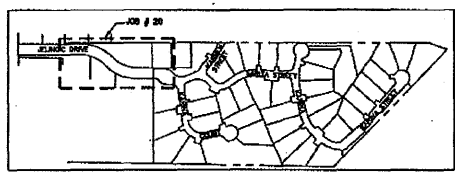
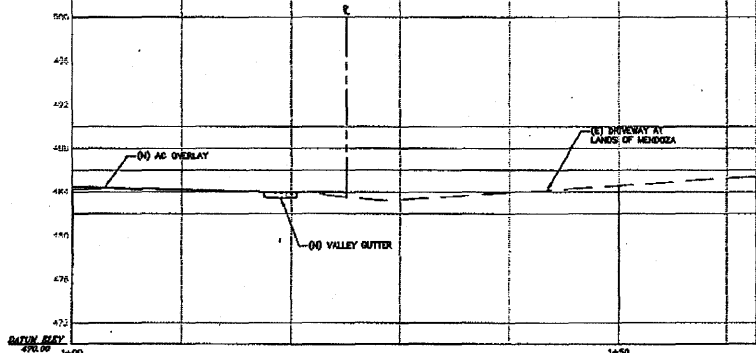
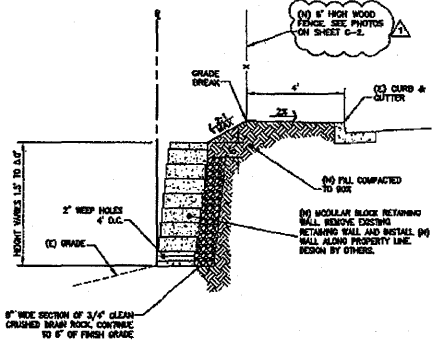
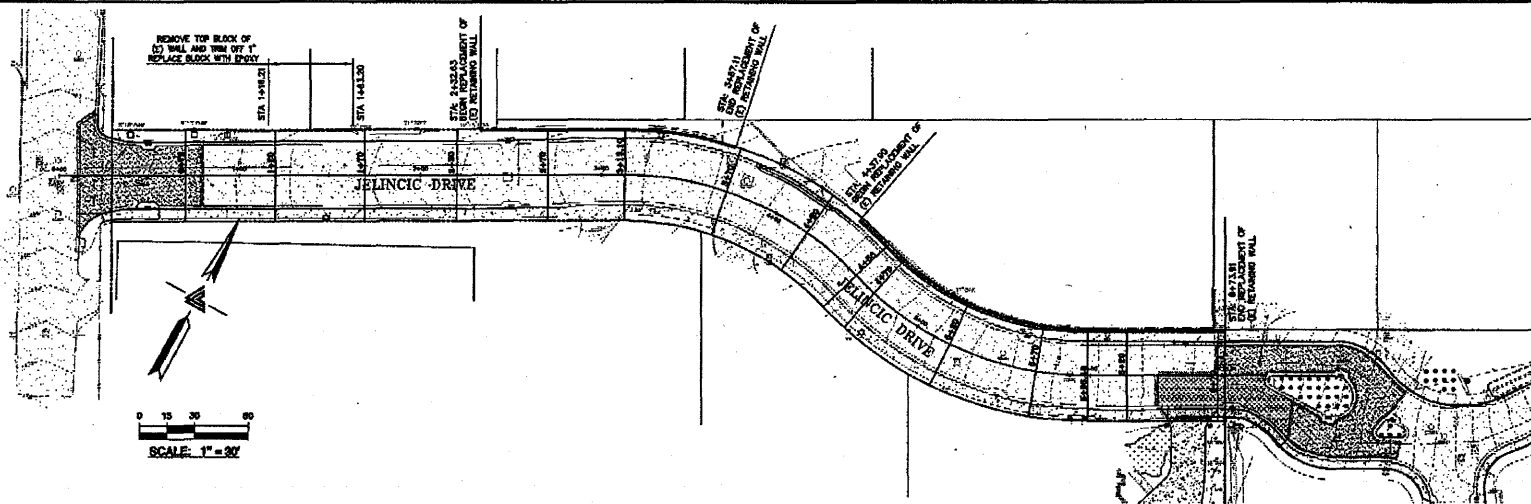


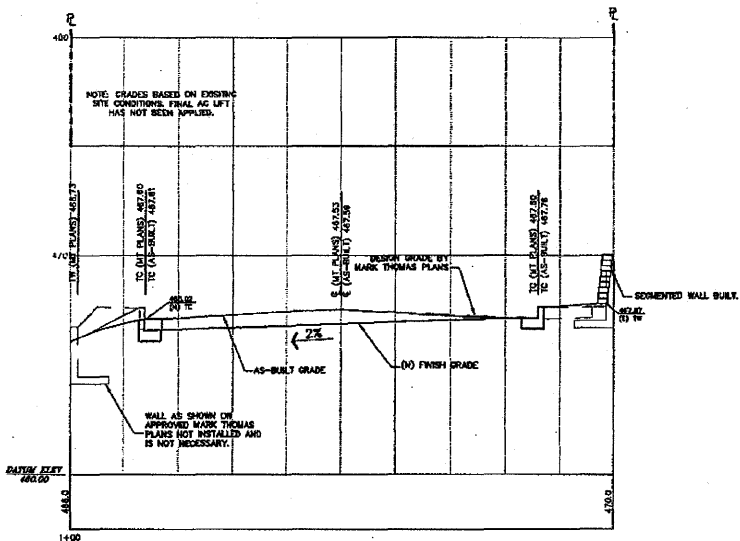
IMAGE OF PROPOSED RETAINING WALLS

JOB # 20
 SCALE: 1" = 20'

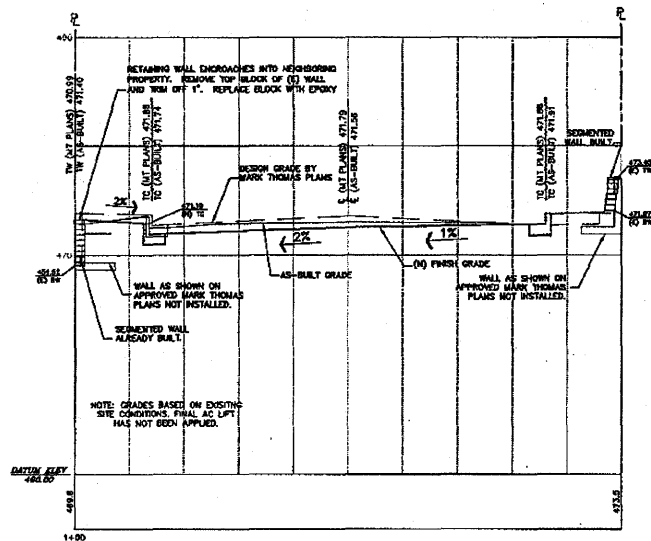




SCALE: 1" = 30'



STATION 0+70
1"=5' HOR & 1"=2.5' VERT



STATION 1+20
1"=5' HOR & 1"=2.5' VERT



LEA A BRAZE ENGINEERING, INC.
 CIVIL ENGINEERING • LAND SURVEYING
 5125 SANDY RIDGE ROAD, SUITE 200
 BAY AREA REGION, ROCKWELL, CA 94588
 NATIONAL LICENSE NUMBER: 44521
 (708) 887-1000
 (708) 887-1000
 WWW.LEABRAZE.COM

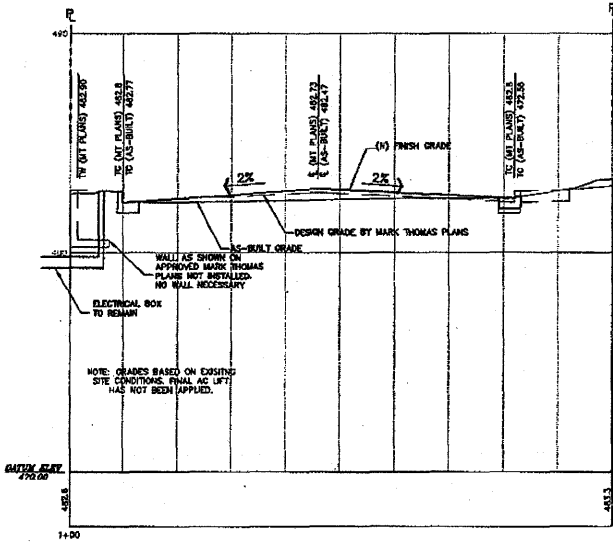
TRACT 6102
 JELENCIC DRIVE
 EDEN TOWNSHIP
 UNINCORPORATED JAMES CO. KY

JOB # 20
 SECTIONS
 STA 0+70 TO 1+20

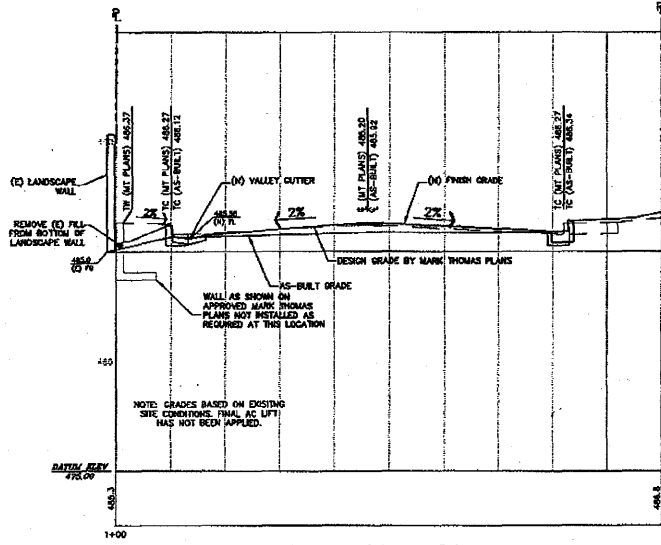
REVISIONS	BY
JOB NO:	2100004
DATE:	8-2-11
SCALE:	1" = 30'
DESIGN BY:	JR/RC
DRAWN BY:	TS
SHEET NO.	

C-13

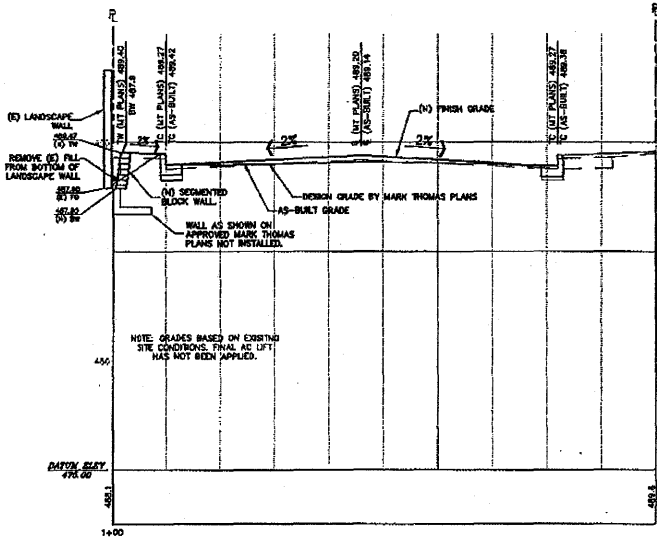
13 OF 22 SHEETS



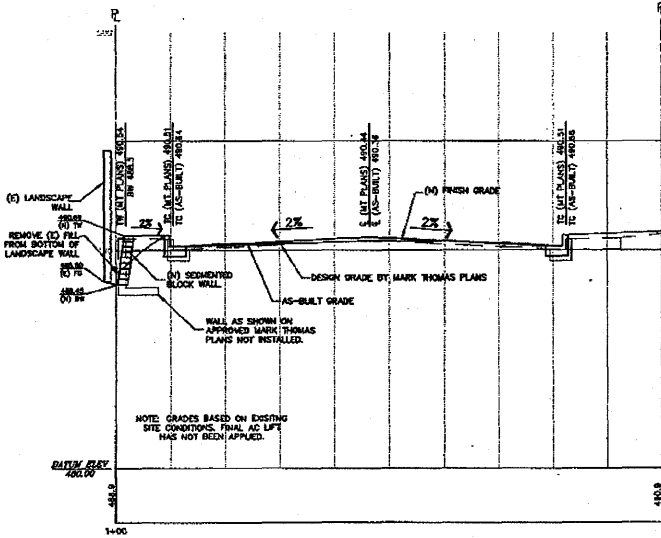
STATION 3+70
1"=5' HOR & 1"=2.5' VERT



STATION 4+20
1"=5' HOR & 1"=2.5' VERT



STATION 4+56
1"=5' HOR & 1"=2.5' VERT



STATION 4+70
1"=5' HOR & 1"=2.5' VERT

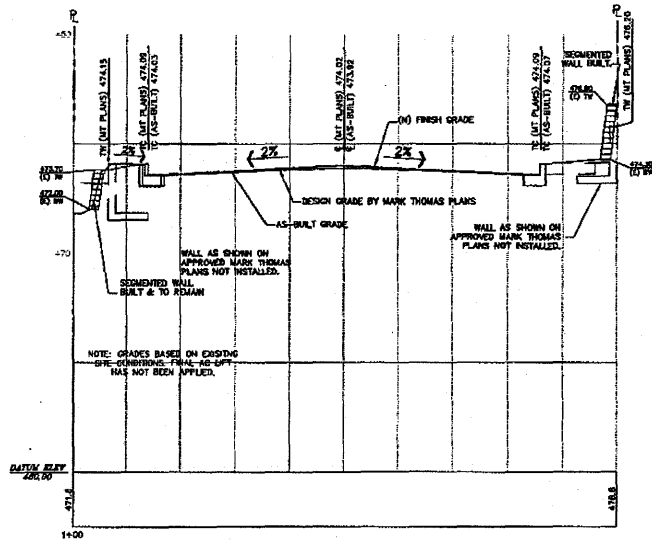


LEA & BRAZE ENGINEERS, INC.
 LEA & BRAZE ENGINEERS, INC.
 207 EAST J. ROSS, # 300
 ANN ARBOR, MICHIGAN 48106
 (734) 769-2000
 (734) 769-2000
 (734) 769-2000
 WWW.LEABRAZE.COM

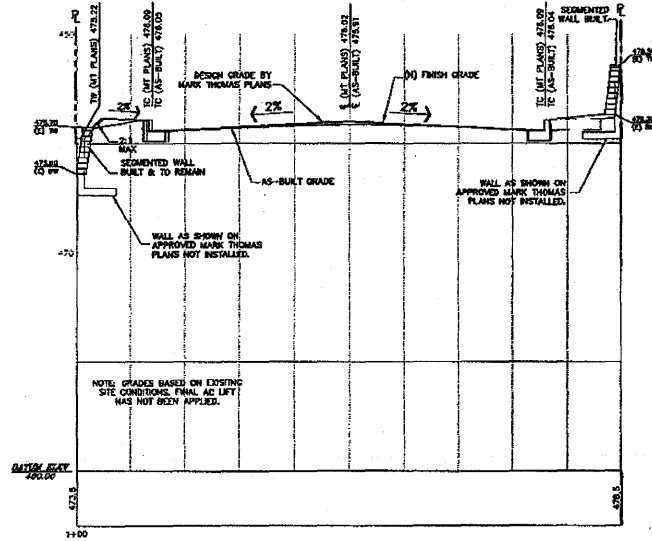
TRACT 6102
 JELINCIC DRIVE
 EDEN TOWNSHIP
 UNINCORPORATED ALABAMA COUNTY

JOB # 20
 SECTIONS
 STA 3+70 TO 4+70

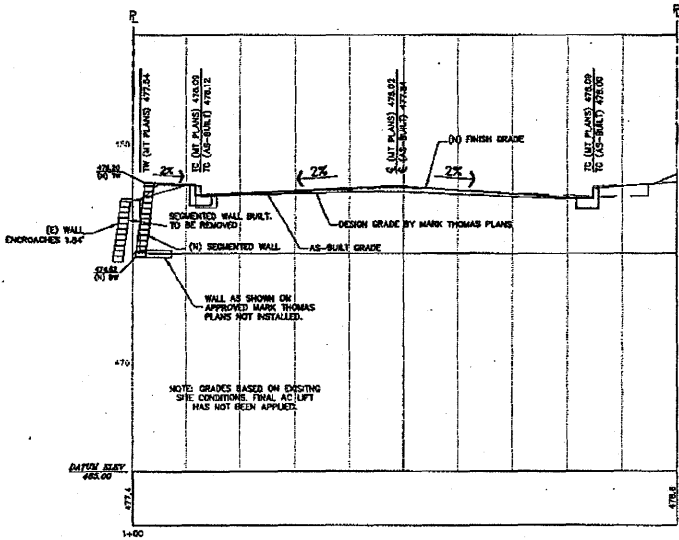
REVISIONS	BY
JOB NO.	2100094
DATE	8-5-11
SCALE	1" = 30'
DESIGN BY	JS/RC
DRAWN BY	BB
SHEET NO.	



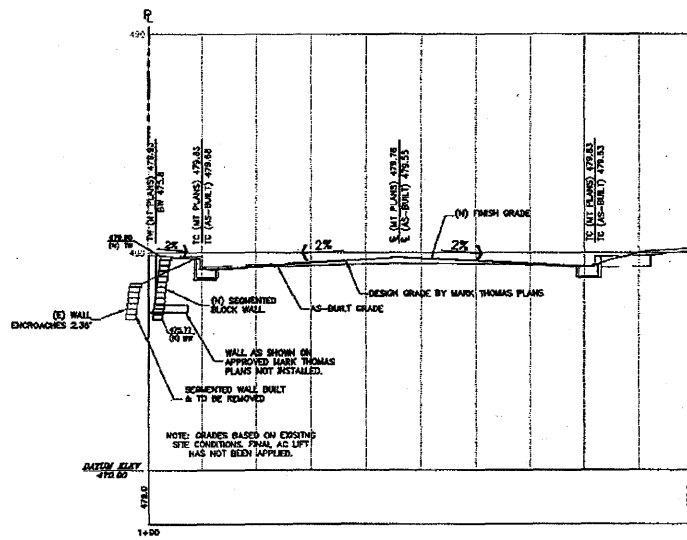
STATION 1+70
1"=5' HOR & 1"=2.5' VERT



STATION 2+20
1"=5' HOR & 1"=2.5' VERT



STATION 2+70
1"=5' HOR & 1"=2.5' VERT



STATION 3+13.10
1"=5' HOR & 1"=2.5' VERT



LEN & GRAZE ENGINEERING, INC.
 ENGINEERS & LAND SURVEYORS
 2000 W. US HWY 90, BOX 100
 2000 W. US HWY 90, BOX 100
 2000 W. US HWY 90, BOX 100
 (P) (407) 939-1328
 (F) (407) 939-1328
 (C) (407) 939-1328
 (M) (407) 939-1328

**TRACT 6102
 JELINCIC DRIVE
 EDEN TOWNSHIP**
 INCORPORATED ALAMEDA COUNTY

**JOB # 20
 SECTIONS
 STA 1+70 TO 3+13.10**

NO.	REVISIONS	BY
1		
2		
3		
4		
5		
6		
7		
8		
9		
10		

JOB NO: 2100094
 DATE: 8-5-11
 SCALE: 1" = 30'
 DESIGN BY: JLR/RC
 DRAWN BY: TD
 SHEET NO:



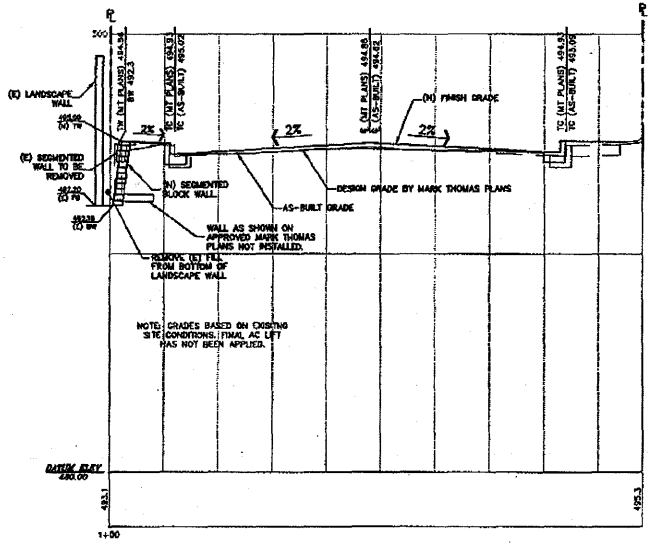
LEA & BRAZE ENGINEERING, INC.
 CIVIL ENGINEERING ARCHITECTURE
 2007 RICHMOND BLVD. # 200
 RAYLEIGH, NORTH CAROLINA 27604
 (919) 852-4400 (F) (919) 852-1338
 (919) 852-8888 (WWW.LEA-BRAZE.COM)

TRACT 6102
 JELINCIC DRIVE
 EDEN TOWNSHIP
 UNINCORPORATED ALAMEDA COUNTY

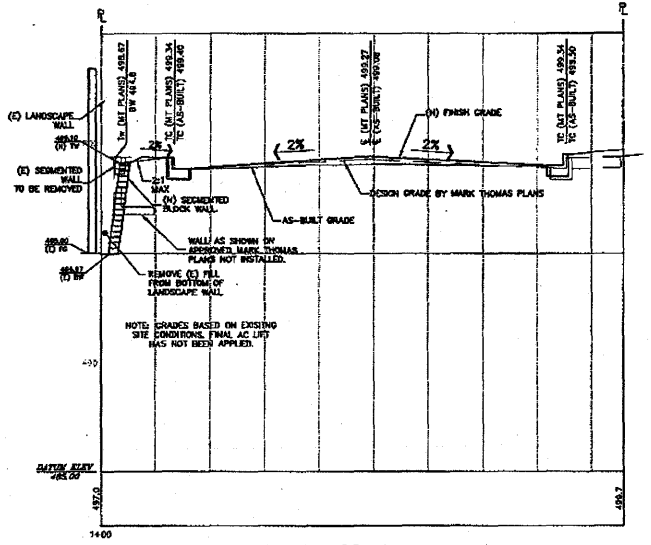
JOB # 20
 SECTIONS
 STA 5+20 TO 6+20

NO.	REVISIONS	BY

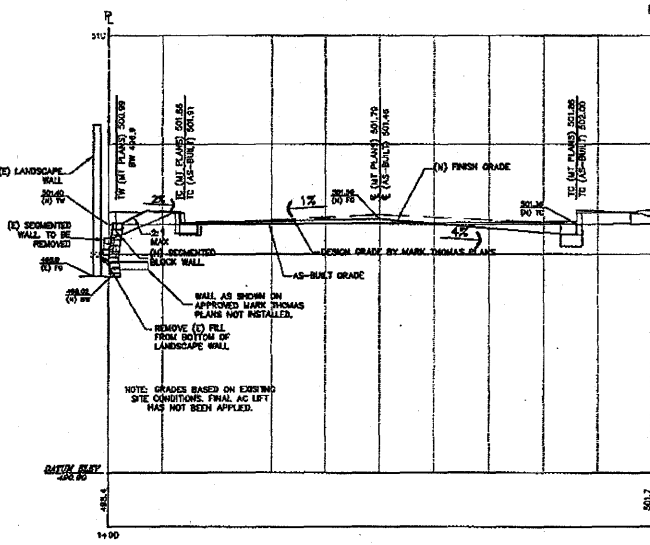
JOB NO. 2100094
 DATE: 6-5-11
 SCALE: 1" = 30'
 DESIGN BY: JY/RC
 DRAWN BY: RB
 SHEET NO.:



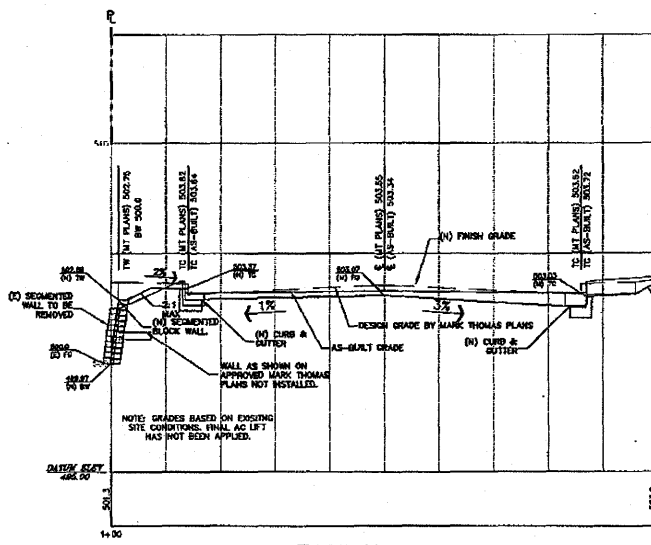
STATION 5+20
 1"=5' HOR & 1"=2.5' VERT



STATION 5+70
 1"=5' HOR & 1"=2.5' VERT



STATION 5+98.48
 1"=5' HOR & 1"=2.5' VERT



STATION 6+20
 1"=5' HOR & 1"=2.5' VERT



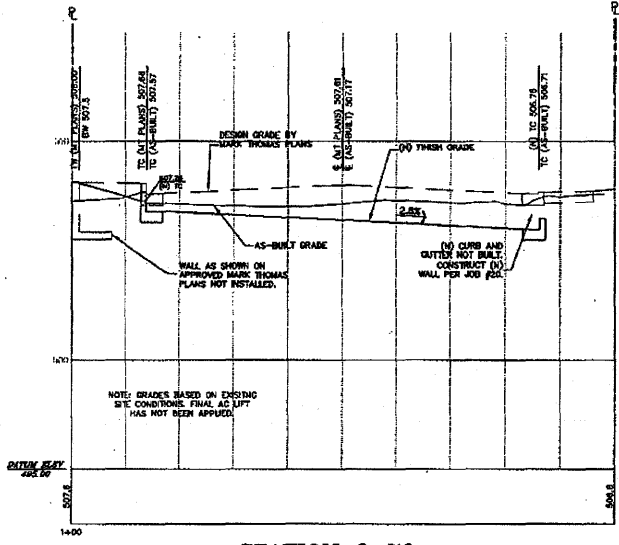
LEA & BRAZE ENGINEERING, INC.
 CIVIL ENGINEERS & LAND SURVEYORS
 2000 W. STATE ST. SUITE 100
 RAYLEIGH, NC 27601
 (919) 850-1100
 (919) 850-1101
 WWW.LEAANDBRAZE.COM

TRACT 6102
 JELINCIC DRIVE
 EDEN TOWNSHIP
 UNINCORPORATED HANCOCK COUNTY

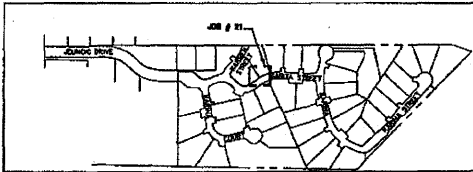
JOB # 20
 SECTIONS
 STA 6+70

REVISIONS	BY
JOB NO.	21000004
DATE	8-5-11
SCALE	1" = 30'
DESIGN BY	JR/TC
DRAWN BY	TB
SHEET NO.	

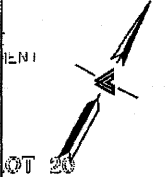
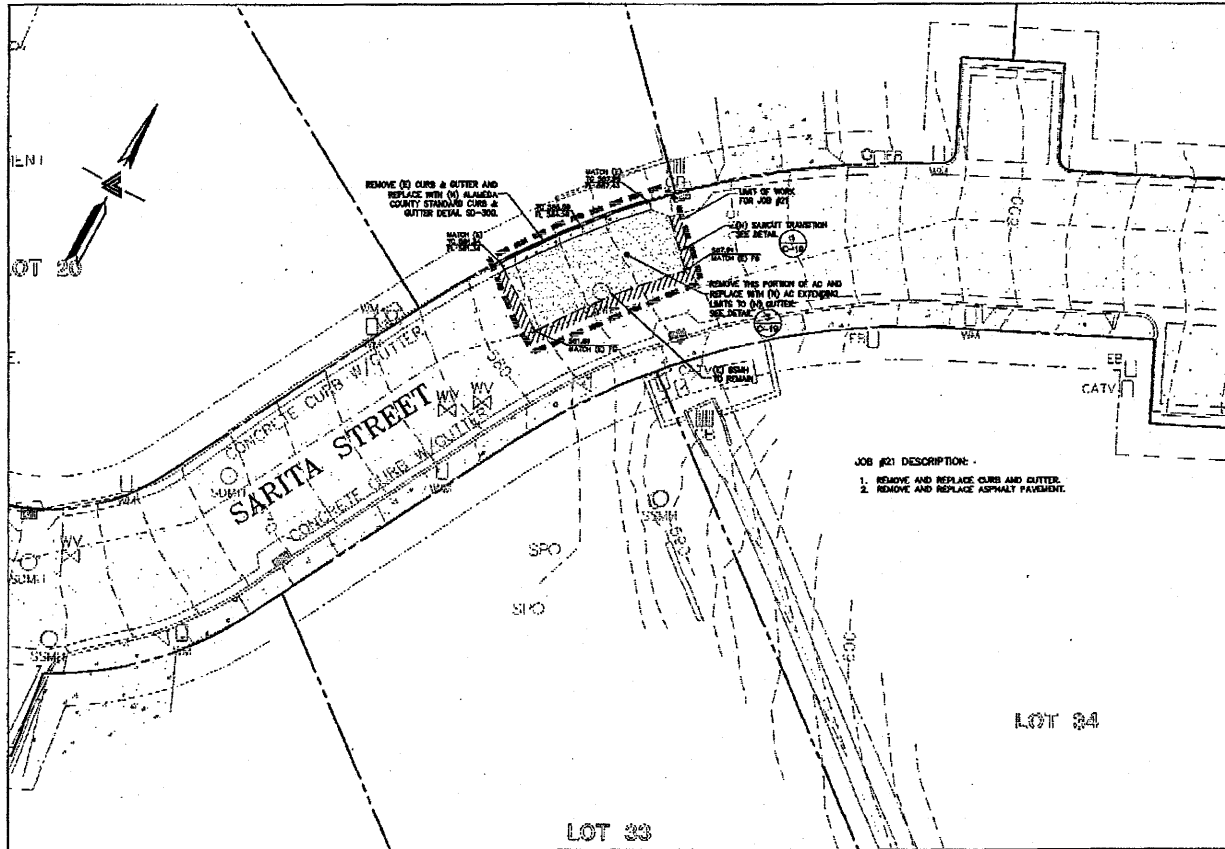
C-17
 17 OF 22 SHEETS



STATION 6+70
 1"=5' HOR & 1"=2.5' VERT



KEY MAP
SCALE: 1" = 200'



JOB #21 DESCRIPTION:
 1. REMOVE AND REPLACE CURB AND GUTTER.
 2. REMOVE AND REPLACE ASPHALT PAVEMENT.

JOB # 21
SCALE: 1" = 10'



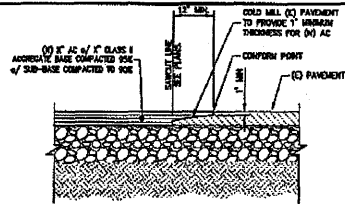
LEA & BRAZE ENGINEERING, INC.
 CIVIL ENGINEERS & LAND SURVEYORS
 BAY AREA OFFICE: SACRAMENTO REGION 300
 HAYWARD, CALIFORNIA 94545 (916) 938-4328
 NORTHERN CALIFORNIA OFFICE: 1000 S. HARRIS
 AVENUE, SUITE 1000, SACRAMENTO, CA 95805
 (916) 938-1128
 (916) 938-1000
 WWW.LEABRAZE.COM

TRACT 6102
 JELINCIC DRIVE
 EDEN TOWNSHIP
 UNINCORPORATED ALAMEDA COUNTY

JOB # 21

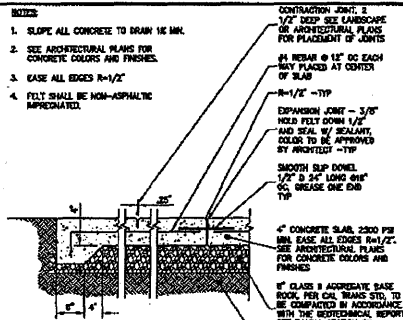
NO.	REVISIONS	BY

JOB NO. 2100294
 DATE: 8-3-11
 SCALE: AS NOTED
 DESIGN BY: JL/RC
 DRAWN BY: TB
 SHEET NO.

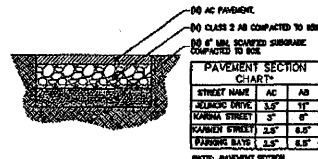


- NOTES:**
1. 7E-IN PAVEMENT SECTION AS SHOWN ON PLANS.
 2. 7E-IN OF ASPHALT CONCRETE SHALL EXTEND TO AT LEAST THE BOTTOM OF EXISTING ASPHALT CONCRETE.

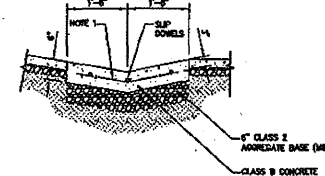
1 ASPHALT PAVEMENT TIE-IN
NTS



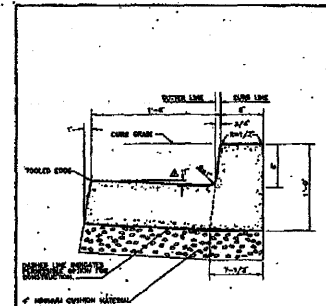
2 CONCRETE PAVING
NTS



3 (N) AC PAVEMENT SECTION
NTS



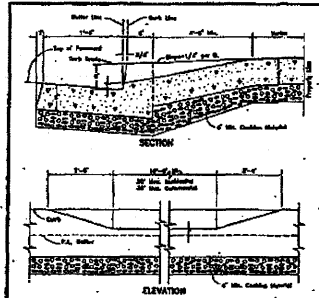
4 CONCRETE VALLEY GUTTER
NTS



P.C.C. CURB AND GUTTER AREA = 1.842 SQ. FT.

COUNTY OF ALAMEDA - PUBLIC WORKS AGENCY	
DATE: June 1992	SCALE: 1/4" = 1'-0"
P.C.C. CURB AND GUTTER	
JOB NO. 919	DATE: June 1992
BY: [Signature]	CHECKED BY: [Signature]

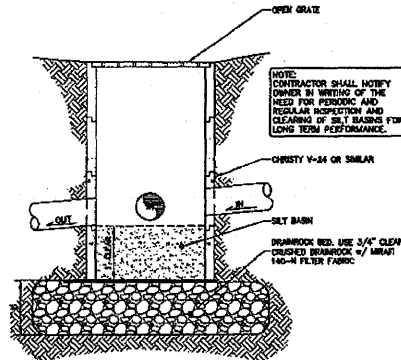
5 ALAMEDA COUNTY STANDARD CURB & GUTTER
NTS



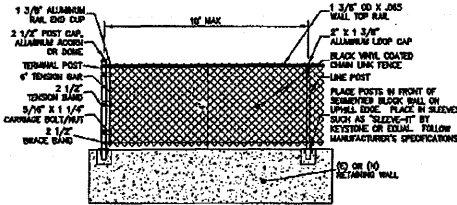
CONCRETE DRIVEWAY (CURB AND SIDEWALK SEPARATED)

COUNTY OF ALAMEDA - PUBLIC WORKS AGENCY	
DATE: October 1990	SCALE: 1/4" = 1'-0"
CONCRETE DRIVEWAY	
JOB NO. 307	DATE: October 1990
BY: [Signature]	CHECKED BY: [Signature]

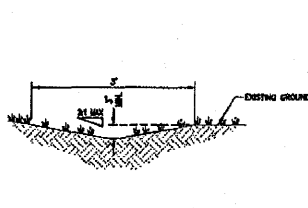
6 ALAMEDA COUNTY STANDARD DRIVEWAY APPROACH
NTS



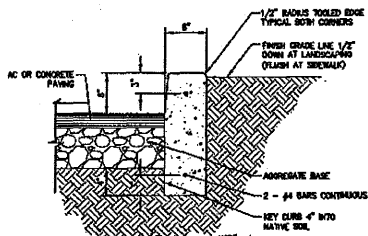
7 DRAIN INLET/SILT BASIN
NTS



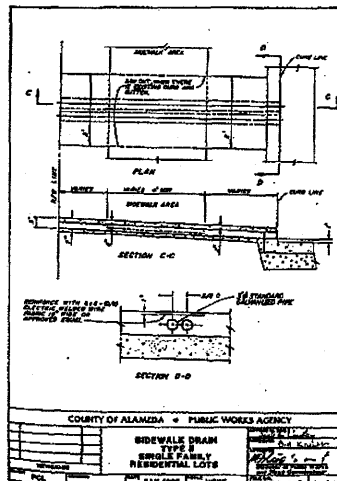
8 4' CHAIN LINK FENCE
NTS



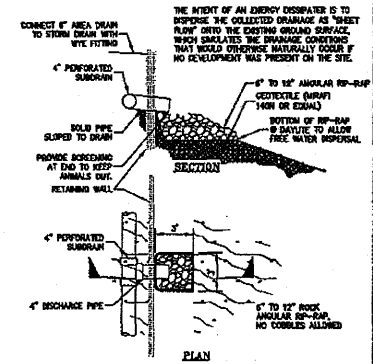
9 EARTHEN SWALE DETAIL
NTS



10 CONCRETE CURB
NTS



11 ALAMEDA COUNTY STANDARD SIDEWALK DRAIN
NTS



12 ROCK OUTFALL
NTS



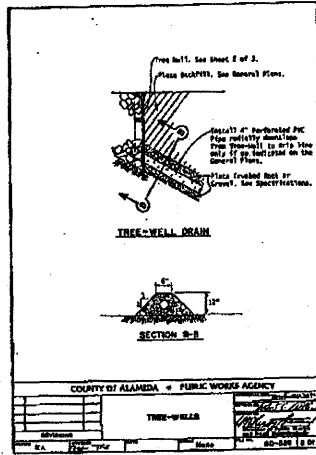
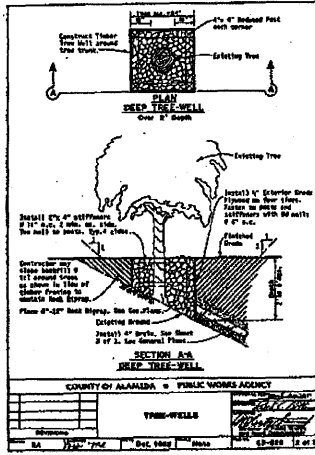
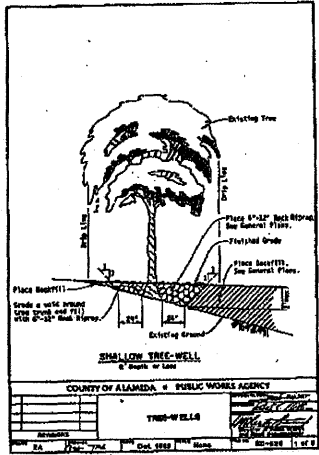
LEA & BRAZE ENGINEERING, INC.
Professional Engineers and Surveyors
2017 RICHMOND STREET
MAYFIELD AVENUE WEST
SAN FRANCISCO, CALIF. 94122
(415) 431-8888 FAX (415) 431-1388
(415) 431-8888 FAX (415) 431-1388
WWW.LEAANDBRAZE.COM

TRACT 6102
JELINCIC DRIVE
EDEN TOWNSHIP
UNINCORPORATED ALAMEDA COUNTY

DETAILS

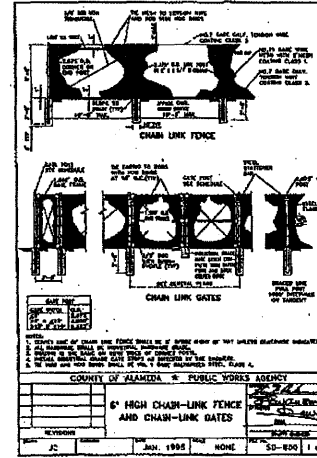
NO. 1	BY
NO. 2	BY
NO. 3	BY
NO. 4	BY
NO. 5	BY
NO. 6	BY
NO. 7	BY
NO. 8	BY
NO. 9	BY
NO. 10	BY
NO. 11	BY
NO. 12	BY

C-19
19 OF 22 SHEETS



ALAMEDA COUNTY STANDARD
TREE WELLS

1
C-29
MIS



ALAMEDA COUNTY STANDARD
6' CHAIN LINK FENCE

2
C-29
MIS

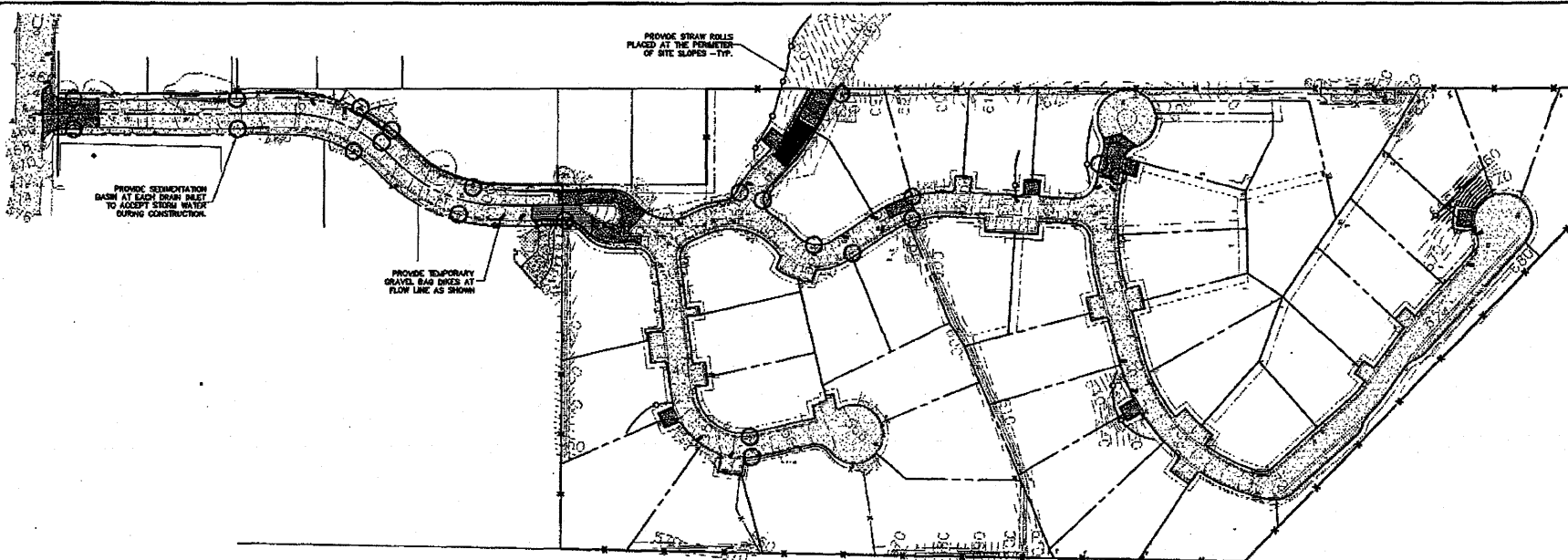


LEA & BRAZE ENGINEERS, INC.
CIVIL ENGINEERS • LAND SURVEYORS
2335 CALIFORNIA AVE. SUITE 203
SAN JOSE, CALIFORNIA 95131
TEL. (415) 351-7313
FAX (415) 351-7314
WWW.LEAANDBRAZE.COM

TRACT 6102
JELINCIC DRIVE
EDEN TOWNSHIP
UNINCORPORATED ALAMEDA COUNTY

DETAILS

REVISIONS	BY
JOB NO.	210004
DATE	6-5-11
SCALE	AS NOTED
DESIGN BY	JR/AC
DRAWN BY	TB
SHEET NO.	
C-20	
20 OF 22 SHEETS	



LEA & BRAZE ENGINEERS, INC.
 CIVIL ENGINEERS • LAND SURVEYORS
 1400 S. GARDNER
 SACRAMENTO, CALIFORNIA 95833
 (916) 486-1300
 (916) 486-1300
 (916) 486-1300
 WWW.LEA-BRAZE.COM

TRACT 6102
 JELINCIC DRIVE
 EDEN TOWNSHIP
 UNINCORPORATED ALABAMA COUNTY

EROSION CONTROL PLAN

EROSION CONTROL NOTES:

- IT SHALL BE THE OWNER'S/CONTRACTOR'S RESPONSIBILITY TO MAINTAIN CONTROL OF THE ENTIRE CONSTRUCTION OPERATION AND TO KEEP THE ENTIRE SITE IN COMPLIANCE WITH THIS EROSION CONTROL PLAN.
- THE INTENTION OF THIS PLAN IS FOR INTERIM EROSION AND SEDIMENT CONTROL ONLY. ALL EROSION CONTROL MEASURES SHALL CONFORM TO CALIFORNIA REGIONAL WATER QUALITY CONTROL BOARD'S FIELD MANUAL FOR EROSION AND SEDIMENTATION CONTROL, THE CALIFORNIA STORM WATER QUALITY ASSOCIATION BEST MANAGEMENT PRACTICES HANDBOOK FOR CONSTRUCTION, AND THE LOCAL GOVERNING AGENCY FOR THIS PROJECT.
- OWNER/CONTRACTOR SHALL BE RESPONSIBLE FOR MONITORING EROSION AND SEDIMENT CONTROL MEASURES PRIOR TO, DURING, AND AFTER STORM EVENTS. PERSON IN CHARGE OF MAINTAINING EROSION CONTROL MEASURES SHOULD WATCH LOCAL WEATHER REPORTS AND ACT APPROPRIATELY TO MAKE SURE ALL NECESSARY MEASURES ARE IN PLACE.
- SANITARY FACILITIES SHALL BE MAINTAINED ON THE SITE AT ALL TIMES.
- DURING THE RAINY SEASON, ALL PAVED AREAS SHALL BE KEPT CLEAR OF EARTH MATERIAL AND DEBRIS. THE SITE SHALL BE MAINTAINED SO AS TO MINIMIZE SEWER/STORM OVERFLOW TO ANY STORM DRAINAGE SYSTEM, INCLUDING EXISTING DRAINAGE SWALES AND WATERCOURSES.
- CONSTRUCTION OPERATIONS SHALL BE CONDUCTED IN SUCH A MANNER THAT EROSION AND WATER POLLUTION WILL BE MINIMIZED. COMPLIANCE WITH FEDERAL, STATE AND LOCAL LAWS CONCERNING POLLUTION SHALL BE MAINTAINED AT ALL TIMES.
- CONTRACTOR SHALL PROVIDE DUST CONTROL AS REQUIRED BY THE APPROPRIATE FEDERAL, STATE AND LOCAL AGENCY REQUIREMENTS.
- ALL MATERIALS NECESSARY FOR THE APPROVED EROSION CONTROL MEASURES SHALL BE IN PLACE BY OCTOBER 15TH.
- EROSION CONTROL SYSTEMS SHALL BE INSTALLED AND MAINTAINED THROUGHOUT THE RAINY SEASON, OR FROM OCTOBER 15TH THROUGH APRIL 15TH, WHICHEVER IS LONGER.
- IN THE EVENT OF RAIN, ALL GRADING WORK IS TO CEASE IMMEDIATELY AND THE SITE IS TO BE SEALED IN ACCORDANCE WITH THE APPROVAL EROSION CONTROL MEASURES AND APPROVED EROSION CONTROL PLAN.
- THE CONTRACTOR SHALL BE RESPONSIBLE FOR CHECKING AND REPAIRING EROSION CONTROL SYSTEMS AFTER EACH STORM.
- ADDITIONAL EROSION CONTROL MEASURES MAY BE REQUIRED BY LOCAL JURISDICTION'S ENGINEERING DEPARTMENT OR BUILDING OFFICIALS.
- MEASURES SHALL BE TAKEN TO COLLECT OR CLEAN UP ANY ACCUMULATION OR DEPOSIT OF DIRT, MUD, SAND, BROOK, GRASS OR DEBRIS ON THE SURFACE OF ANY STREET, ALLEY OR PUBLIC PLACE OR IN ANY PUBLIC STORM DRAIN SYSTEM. THE REMOVAL OF APPROPRIATE SHALL BE DONE BY STREET CLEANING OR HAND SHEEPING. GRASS SHALL NOT BE USED TO RUSH SEDIMENTS INTO PUBLIC OR PRIVATE SEWAGE FACILITIES.
- EROSION CONTROL MEASURES SHALL BE ON-SITE FROM SEPTEMBER 15TH THRU APRIL 15TH.
- ALL EROSION CONTROL MEASURES SHALL BE INSTALLED AND MAINTAINED THROUGHOUT THE RAINY SEASON OR FROM OCTOBER 15 THRU APRIL 15, WHICHEVER IS GREATER.

EROSION CONTROL MEASURES:

- THE FACILITIES SHOWN ON THIS PLAN ARE DESIGNED TO CONTROL EROSION AND SEDIMENT DURING THE RAINY SEASON, OCTOBER 15TH TO APRIL 15. EROSION CONTROL FACILITIES SHALL BE IN PLACE PRIOR TO OCTOBER 15TH OF ANY YEAR. GRADING OPERATIONS DURING THE RAINY SEASON WHICH LEAVE EXPOSED SLOPES SHALL BE PROTECTED WITH EROSION CONTROL MEASURES IMMEDIATELY FOLLOWING GRADING ON THE SLOPES.
- SITE CONDITIONS AT THE TIME OF PLACEMENT OF EROSION CONTROL MEASURES WILL VARY APPROPRIATE ACTION INCLUDING TEMPORARY SWALES, INLETS, HYDROSEEDING, STRAW ROLLS, ROCK SODS, ETC. SHALL BE TAKEN TO PREVENT EROSION AND SEDIMENTATION FROM LEAVING SITE. EROSION CONTROL MEASURES SHALL BE ADJUSTED AS THE CONDITIONS CHANGE AND THE NEED OF CONSTRUCTION SHIFT.
- CONSTRUCTION ENTRANCES SHALL BE INSTALLED PRIOR TO COMMENCEMENT OF GRADING. ALL CONSTRUCTION TRAFFIC ENTERING ONTO THE PAVED ROADS MUST CROSS THE STABILIZED CONSTRUCTION ENTRANCES. CONTRACTOR SHALL MAINTAIN STABILIZED ENTRANCE AT EACH VEHICLE ACCESS POINT TO EXISTING PAVED STREETS. ANY MUD OR DEBRIS TRACKED ONTO PUBLIC STREETS SHALL BE REMOVED DAILY AND AS REQUIRED BY THE GOVERNING AGENCY.
- ALL EXPOSED SLOPES THAT ARE NOT VEGETATED SHALL BE HYDROSEEDED. IF HYDROSEEDING IS NOT USED OR IS NOT EFFECTIVE BY OCTOBER 15, THEN OTHER BERMATIZING METHODS SHALL BE IMPLEMENTED, SUCH AS EROSION CONTROL MATS, GEOTEXTILES, OR A THREE-STEP APPLICATION OF 1) SEED, 2) FERTILIZER, 3) BLOWN STRAW 3) TACKIFIER AND MULCH. HYDROSEEDING SHALL BE IN ACCORDANCE WITH THE PROVISIONS OF SECTION 207 EROSION CONTROL, AND HIGHWAY PLANTING OF THE STANDARD SPECIFICATION OF THE STATE OF CALIFORNIA DEPARTMENT OF TRANSPORTATION, AS LAST REVISED, REFER TO THE EROSION CONTROL SPECIALS OF THE GRADING SPECIFICATIONS THAT ARE A PART OF THIS PLAN SET FOR FURTHER INFORMATION.
- INLET PROTECTION SHALL BE INSTALLED AT OPEN INLETS TO PREVENT SEDIMENT FROM ENTERING THE STORM DRAIN SYSTEM. INLETS NOT USED IN CONJUNCTION WITH EROSION CONTROL ARE TO BE BLOKED TO PREVENT ENTRY OF SEDIMENT. BARRIERS AND DIVERSIONS MAY BE MADE TO THE PLAN IN THE FIELD. A REPRESENTATIVE OF LEA & BRAZE ENGINEERING SHALL PERFORM A FIELD REVIEW AND ADVISE RECOMMENDATIONS AS NEEDED. CONTRACTOR IS RESPONSIBLE TO NOTIFY LEA & BRAZE ENGINEERING AND THE GOVERNING AGENCY OF ANY CHANGES.
- THIS EROSION AND SEDIMENT CONTROL PLAN MAY NOT COVER ALL THE SITUATIONS THAT MAY ARISE DURING CONSTRUCTION DUE TO UNANTICIPATED FIELD CONDITIONS. VARIATIONS AND ADJUSTMENTS MAY BE MADE TO THE PLAN IN THE FIELD. A REPRESENTATIVE OF LEA & BRAZE ENGINEERING SHALL PERFORM A FIELD REVIEW AND ADVISE RECOMMENDATIONS AS NEEDED. CONTRACTOR IS RESPONSIBLE TO NOTIFY LEA & BRAZE ENGINEERING AND THE GOVERNING AGENCY OF ANY CHANGES.
- THE EROSION CONTROL MEASURES SHALL CONFORM TO THE LOCAL JURISDICTION'S STANDARDS AND THE APPROVAL OF THE LOCAL JURISDICTION'S ENGINEERING DEPARTMENT.
- STRAW ROLLS SHALL BE PLACED AT THE TOE OF SLOPES AND ALONG THE DOWN SLOPE PERIMETER OF THE GRADIENT. THEY SHALL BE PLACED AT 25 FOOT INTERVALS ON GRADED SLOPES. PLACEMENT SHALL RUN WITH THE CONTOURS AND ROLLS SHALL BE TIGHTLY BUT NOT BUTTED. CONTRACTOR SHALL REFER TO MANUFACTURER'S SPECIFICATIONS FOR PLACEMENT AND INSTALLATION INSTRUCTIONS.

PURPOSE:

THE PURPOSE OF THIS PLAN IS TO STABILIZE THE SITE TO PREVENT EROSION OF GRADED AREAS AND TO PREVENT SEDIMENTATION FROM LEAVING THE CONSTRUCTION AREA AND AFFECTING NEIGHBORING SITES, NATURAL AREAS, PUBLIC FACILITIES OR ANY OTHER AREA THAT MIGHT BE AFFECTED BY SEDIMENTATION. ALL MEASURES SHOWN ON THIS PLAN SHOULD BE CONSIDERED THE MINIMUM REQUIREMENTS NECESSARY. SHOULD FIELD CONDITIONS DICTATE ADDITIONAL MEASURES, SUCH MEASURES SHALL BE PER CALIFORNIA REGIONAL WATER QUALITY CONTROL BOARD'S FIELD MANUAL FOR EROSION AND SEDIMENTATION CONTROL, AND THE CALIFORNIA STORM WATER QUALITY ASSOCIATION BEST MANAGEMENT PRACTICES HANDBOOK FOR CONSTRUCTION. LEA & BRAZE ENGINEERING SHOULD BE NOTIFIED IMMEDIATELY SHOULD CONDITIONS CHANGE.

EROSION CONTROL LEGEND:

- GRAVEL BAG DIKE
- SEDIMENTATION BASIN
- STRAW ROLL

PERIODIC MAINTENANCE:

- MAINTENANCE IS TO BE PERFORMED AS FOLLOWS:
 - DAMAGES CAUSED BY SOIL EROSION OR CONSTRUCTION SHALL BE REPAIRED AT THE END OF EACH WORKING DAY.
 - SWALES SHALL BE INSPECTED PERIODICALLY AND MAINTAINED AS NEEDED.
 - SEDIMENT TRAPS, BERMS, AND SWALES ARE TO BE INSPECTED AFTER EACH STORM AND REPAIRS MADE AS NEEDED.
 - SEDIMENT SHALL BE REMOVED AND SEDIMENT TRAP RESTORED TO ITS ORIGINAL DIMENSIONS WHEN SEDIMENT HAS ACCUMULATED TO A DEPTH OF 1 FOOT.
 - SEDIMENT REMOVED FROM TRAP SHALL BE DEPOSITED IN A SANITABLE AREA AND IN SUCH A MANNER THAT IT WILL NOT ERODE.
 - RILLS AND GULLIES MUST BE REPAIRED.
- GRAVEL BAG DIKE PROTECTION SHALL BE CLEANED OUT WHENEVER SEDIMENT DEPTH IS ONE HALF THE HEIGHT OF ONE GRAVEL BAG.
- STRAW ROLLS SHALL BE PERIODICALLY CHECKED TO ASSURE PROPER FUNCTION AND CLEANED OUT WHENEVER THE SEDIMENT DEPTH REACHES HALF THE HEIGHT OF THE ROLL.
- SOIL FENCE SHALL BE PERIODICALLY CHECKED TO ASSURE PROPER FUNCTION AND CLEANED OUT WHENEVER THE SEDIMENT DEPTH REACHES HALF THE HEIGHT.
- CONSTRUCTION ENTRANCE SHALL BE REGRADUED AS NECESSARY FOLLOWING SILT/SOIL BUILDUP.
- ANY OTHER EROSION CONTROL MEASURES SHOULD BE CHECKED AT REGULAR INTERVALS TO ASSURE PROPER FUNCTION.

NOTE: SEAL ALL OTHER INLETS NOT INTENDED TO ACCEPT STORM WATER AND DIRECT FLOWS TEMPORARILY TO FUNCTIONAL SEDIMENTATION BASIN INLETS. -TYP

EROSION CONTROL MEASURES SHALL BE IN PLACE AND MAINTAINED FROM OCTOBER 15 TO APRIL 15 AS REQUIRED.

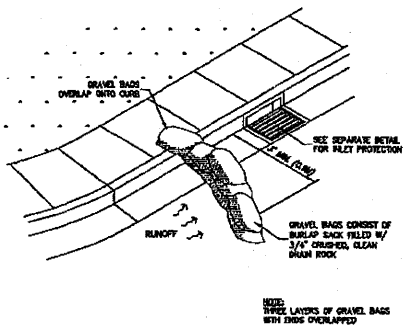
NOTE: EROSION CONTROL IS ONLY REQUIRED IMMEDIATELY DOWNHILL OF ANY CONSTRUCTION IN PROGRESS. EROSION CONTROL MEASURES CAN BE RELOCATED AS NECESSARY AND STILL FUNCTION.

REFERENCES:

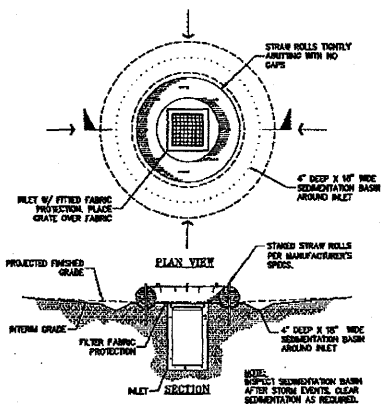
- CALIFORNIA REGIONAL WATER QUALITY CONTROL BOARD'S FIELD MANUAL FOR EROSION AND SEDIMENTATION CONTROL.
- CALIFORNIA STORM WATER QUALITY ASSOCIATION BEST MANAGEMENT PRACTICES HANDBOOK FOR CONSTRUCTION.

NO.	REVISIONS	BY

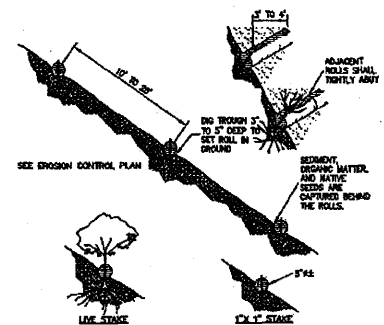
JOB NO: 2100094
 DATE: 0-5-11
 SCALE: 1" = 60'
 DESIGN BY: JR/JC
 DRAWING BY: JB
 SHEET NO:



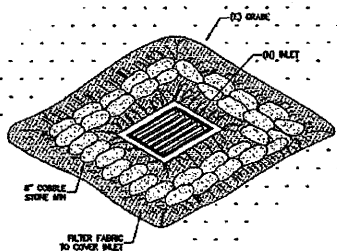
1 GRAVEL BAG DIKE
CR-3 NTS



2 SEDIMENTATION BASIN
CR-4 NTS



3 STRAW ROLLS
CR-2 NTS



4 INLET PROTECTION
CR-3 NTS



LEA & BRAZE ENGINEERS, INC.
 CIVIL ENGINEERS LAND SURVEYORS
 SHERMAN ROAD
 BAY AREA REGION 1000
 EASTMAN AVE. SUITE 200
 RAYNOR, CALIFORNIA 95870
 (916) 584-1133
 (707) 881-3888
 WWW.LEA-BRAZE.COM

TRACT 6102
 JELINCIC DRIVE
 EDEN TOWNSHIP
 UNINCORPORATED HAMBURG COUNTY

EROSION CONTROL
 DETAILS

NO.	REVISIONS	BY

JOB NO: 21000004
 DATE: 8-5-11
 SCALE: AS NOTED
 DESIGNED BY: JLR/RC
 DRAWN BY: TB
 SHEET NO:

ER-P
 22 OF 22 SHEETS